

Lindau  
B O D E N S E E

## HOLIDAY MAGAZINE 2020

### HOSPITALITY THAT COMES FROM THE HEART

Lindau welcomes visitors from all over the world

### CULTURAL HIGHLIGHT 2020

„Paula & Otto – Evolution in Art and Love“

Works by Paula Modersohn-Becker & Otto Modersohn



## **WE ARE DELIGHTED TO WELCOME YOU TO LINDAU!**

**A**re you already joyfully anticipating your holiday in Lindau? Or do you want to, first of all, find out what our town and the region have to offer? Well, we can tell you already now: lots!

Lindau is located in the four-country region of Lake Constance – where, in a radius of only 70 kilometres, Germany, Austria, Switzerland and Liechtenstein await you with diverse, international flair and a large number of attractions. The mix of quaint villages and lively cities, crystal clear waters and imposing mountains, traditional customs and modern ways of life fascinates conference guests and vacationers from the whole world every year. Some, who want to exercise both body and mind, want to experience as much as possible and to discover new things. Others want to switch off, to come down and to just be. Lindau is the right place for all these people with their different desires and individual expectations – and we work hard to keep it that way. You will be able to read a lot about it in this magazine – but you will also be able to see and experience it at many locations in our town.

We are very keen to offer you as a guest an attractive vacation – to this end, the city and its partners have invested in major projects like the Lindau thermal baths, the horticultural show in 2021 or the expansion of the railway line. At the same time, we also make a contribution that is also permanently felt and visible to the locals. Because only those who like living here are also good hosts. Maintaining this balance, as well as the balance between meaningful use and sensitive conservation of resources, is important to us. We know that we must treasure the beauty and the richness of the nature that surrounds us, and we want to ensure that following generations can still enjoy it.

We wish you a wonderful stay in our town and the Lake Constance region, where I am sure that everyone will find that special something that makes their holiday unforgettable. Discover your own personal 'Lindau Lifestyle' and enjoy the best time of the year with us!

Sincerely yours,  
Carsten Holz  
Managing Director Lindau Tourismus & Kongress GmbH

## CONTENTS

**6 Plan cleverly – travel relaxed**  
Tips for your travel planning

**8 Must-sees**  
Lindau's highlights at a glance

**12 Lake Constance: fascinating in all seasons**  
What you can experience when

**20 Highlight of 2020**

**21 Sightseeing tours**

**24 Renowned artists, high-class exhibitions**  
Paula Modersohn-Becker & Otto Modersohn at the Art Museum

**28 Rich diversity on the stages of the town**  
A varied cultural programme for every age group

**32 Space for encounters, room for insights**  
Inselhalle Lindau welcomes guests from all over the world

**34 Here's to the town, freedom and life**  
Lindau Children's Festival celebrates its 365th anniversary



**37 Cute cult object: the Milchpilz**  
A kiosk with history

**40 Craft, tradition and passion: for the love of coffee**  
A portrait of the Hensler specialty coffee roasting house

**44 Green is good for you**  
Discover the town's natural oases

**50 At your service**  
These people make Lindau beautiful

**52 Teeing off with a tableau**  
A visit to the Bad Schachen Golf Club

**56 Looking for that extra something?**  
Lindau offers luxury, too

**60 Creative individuality**  
The island of artists

**62 With small steps towards big goals**  
Acting sustainably is really easy

**64 One lake – a lot to see**  
Tips for trips to the four-country region

**68 Making connections through common experiences**  
A family hike via Pfänder and Fluh

**72 Accommodation**

**94 Getting here & getting around**

**95 Info & contact**

**96 Interesting facts from A–Z**





## CLEVER PLANNING – RELAXED TRAVEL: THESE TIPS WILL MAKE YOUR HOLIDAY EVEN MORE RELAXING.

### BENEFIT FROM PERSONAL CONSULTATION

We recommend that you book your accommodation through the [lindau.de](http://lindau.de) website. Not only does this portal provide you with the most up-to-date overview of free beds and rooms, but you can also rest assured that the booking has been done reliably and safely. In addition, the employees of the tourist information will also be delighted to personally answer any queries that you might have – if you would like an offer which is individually tailored to you, then this is the right place. Our team knows the local conditions very well, and can give you free advice on accommodation, excursions, sights or even the most popular restaurants. [www.lindau.de/buchung](http://www.lindau.de/buchung)

### TRAVEL BY TRAIN

Traveling by train is not only environmentally friendly, but also comfortable: enjoy the feeling of the world passing by and arrive relaxed in Lindau. In order to make this experience even easier and faster in the future, Deutsche Bahn is currently working on several large projects, some of which will already be completed by the end of 2020. So, for example, in Lindau-Reutin a new station for long-distance and regional transport will be built. In addition, the Lindau to Munich route and the southern railway line from Lindau via Friedrichshafen to Ulm will be electrified and equipped to support higher speeds. This should significantly reduce travel times: From Munich via Lindau to Zurich will then take 3:30 h, Lindau to Stuttgart will then take 2:15 h. To find out which projects are ongoing during your stay, visit the information pages of Deutsche Bahn.

[www.lindau.de/en/dossier/how-to-get-here](http://www.lindau.de/en/dossier/how-to-get-here)

### USE THE CITY BUS FOR FREE

As an overnight guest in Lindau during the high season (April 1 to October 31 every year) you will automatically receive the Lindau guest card, which allows the bearer to use the Lindau city buses for free. So, getting around in the entire Lindau area will be flexible and relaxed. The perks of the card also extend to the Lindau museums as well as offers such as guided tours, boat trips and the puppet opera.

[www.lindau.de/en/dossier/guest-card-and-tourist-tax](http://www.lindau.de/en/dossier/guest-card-and-tourist-tax)

### AVOID TRAFFIC JAMS ON A BIKE

Bicycles can be hired at several locations in Lindau at reasonable prices – be it to find a beautiful swimming spot on the banks of the lake or to make an extended bike trip. Naturally, e-bikes are also offered. You are traveling with your own electric bike? The parking garage of the Inselhalle includes ten bike boxes with electricity that can be rented free of charge. Also, there are several charging stations in the rest of the Lindau urban area. Detailed information can be found in the A–Z section on page 96.

[www.lindau.de/en/dossier/cycling](http://www.lindau.de/en/dossier/cycling)



## GUEST CARD



We want to make your holiday as comfortable as possible! This requires proper, clean infrastructure, the upkeep of numerous signposted walking and hiking trails, freely accessible waterfronts and much more. For this reason, a visitor's tax is charged in Lindau. This tax is constantly adjusted on the basis of the relevant expenses and is € 2.00 per day for adults from 16 years, € 1.30 per day for children and adolescents of six to 15 years old, applicable in the season from 1 April to 31 October. As a thank you, you will receive the Lindau guest card upon registration at your accommodation which carries numerous advantages and price reductions. Find detailed information online or in the flyer for the Lindau guest card, which you can obtain in the Tourist Information directly opposite the train station.

[www.lindau.de/en/dossier/guest-card-and-tourist-tax](http://www.lindau.de/en/dossier/guest-card-and-tourist-tax)



## MUST-SEES

---

A visit to Lindau without a visit of the harbour? Unthinkable! Here, we reveal what else you should see.

**T**here are sights that you simply must visit. In Lindau, this is for sure the world-famous entrance to the harbour – probably everyone who visits the city takes a photo of the lion and the lighthouse back home with them. But there is much more to discover – on the island as well as the mainland. The most important highlights are briefly presented here. You will also find some insider tips from locals on individual pages of this magazine. We've got it all covered, from great vantage points, to favourite cafes up to route suggestions for walks. Discover your favourite Lindau – we hope you have a lot of fun doing it.

### LINDAU HARBOUR

The sandstone lion is six meters high and weighs 50 tons. Since 1856, Germany's southernmost lighthouse stands opposite him. 139 steps lead up to the 36-meter-high tower – once at the top, you can enjoy a wonderful panoramic view of the island town, Lake Constance and the Alps. The lighthouse is open daily from April to September between 11 a.m. and 6 p.m. (only in good weather, admission € 2.10/adults, € 0.80/children).

**OUR TIP** | Take a look at the ensemble also from the Römerschanze – not only will you get a new (photo-) perspective, but you can also take in a bird's-eye view of the Römerbad, which was first opened in 1839.

### DIEBSTURM, PULVERTURM AND MANGTURM

The many towers on the island are remnants of by-gone times – they were named according to uses they fulfilled. So; for instance, the colourful Diebsturm on the highest point of the island, the Schrankenplatz, was long used as a city jail.

The Pulverturm was built by Lindau's citizens in 1508 as part of the town wall; at the end of the 18th century the Lindau militia stored their powder supplies there. In 1898, the mayor Heinrich Schützinger moved into the round tower for 20 years and held fabulous parties with guests including the King of Baden and the airship builder Count Zeppelin.

The square-shaped Mangturm on the lake promenade was built in the Middle Ages as a signal and observation post. Twenty meters high and equipped with embrasures, it was formerly surrounded by water and only accessible via a drawbridge. The tower is named after the earlier cloth and linen hall in the neighbourhood where laundry was washed and pulled through a mangle.

**OUR TIP** | The Pulverturm is not open to the public, but can be hired for events. Visit it on an evening walk and enjoy the sunset with a view of the Swiss mountains!



#### **LINDENHOF PARK**

This beautiful old park in the district of Bad Schachen was created in the mid-19th century by the renowned landscape gardener Maximilian Friedrich Weyhe. In the summer, the huge old trees provide welcome shade, and the Lindenhofbad invites you for a refreshing dip in the cool water. In the autumn and winter, fog often creeps out of the lake over the shore and creates a unique atmosphere of peace and seclusion.

**OUR TIP |** The 'friedens räume' museum can be found at the edge of the park, in the east wing of Villa Lindenhof. By touching, listening and through their own initiative, visitors can interactively engage with the issues of peace and justice.

#### **AESCHACHER BAD**

The bright green Aeschacher Bad which dates from 1911 is often discovered by cyclists and walkers by chance, namely, when they arrive at the railway crossing. Take the time and have a closer look at the construction: it stands on over 120 wooden poles and is one of the last three historical public baths on stilts in Lake Constance. In summer, the public bath is open daily from 10 a.m. to 7 p.m.

**OUR TIP |** Just a few hundred meters away, the Alpine Garden invites visitors to marvel and discover: opened in 1886, the special nursery for alpine and rock garden plants includes about 2,000 varieties, including numerous rarities from around the world.



#### **ANNELIESE SPANGEHL (92)**

**Former City and District Councillor as well as deputy State Councillor, Honorary Citizen of Lindau since 2015**

One of my favourite places is the Gerberschanze: in my childhood, furs and skins were still placed out to dry in front of the workshops close to the redoubt. If I go swimming there today, I often think back to this time – I can still smell the scent in my nose. Sitting on the wall and listening to the lake lapping up against the wall conveys a wonderful calming feeling. For the same reason I also love visiting the Aeschacher Bad: it is so peaceful, you have a fantastic view of the island and mountains and can enjoy the sunset in all its beauty.

---

## SPRING

### FRUIT BLOSSOM

When the mountains are still covered with snow, but the sun is getting stronger and Lake Constance is already auspiciously glittering and the fruit trees are colouring the slopes with pastel-coloured flowers: this is a particularly special time for a stay in our region. Treat yourself to a relaxing break after the winter – for example, a short time-out in a wellness hotel or in a holiday apartment with a view of the sea and mountains. Our colleagues from the Tourist Information will be happy to advise you according to your individual wishes!

[www.lindau.de/buchung](http://www.lindau.de/buchung)

### SPRING WEEKS

The popular Spring Weeks on Lake Constance will take place From March to May 2020. In about 20 places on the German shores of Lake Constance, the motto will be 'Bye Winter, hello flowers!' Whether it be guided walks or biking tours, classical concerts or jazz evenings, artisan markets, tastings or blossom festivals: here guests of all ages can find a diverse programme. Numerous restaurants and hotels have attractive offers as part of the Spring Weeks.

[www.echt-bodensee.de/fruehlingswochen](http://www.echt-bodensee.de/fruehlingswochen)

**LAKE CONSTANCE:  
A FASCINATING  
TRAVEL DESTINATION  
IN ALL SEASONS**

---





## SUMMER

### FESTIVALS & CONCERTS

In summer, the Lindau calendar is full of events for all ages and areas of interest. Especially on the weekend, it's hard to make up your mind: do you go on a boat trip with music and buffet or to the 'Komm und See' wine festival? Do you listen to the free Sunday morning harbour concerts or are the many open-air parties on the island more to your taste? Stroll through the island on a Sunday when the shops are open or rather explore the lake around Lindau with a rental boat? And last but not least, the question arises: do you bathe in one of the many publicly accessible places in Lake Constance or rather in a swimming pool? At least here we can give you some help with making your decision: you can find an overview of all public swimming pools in the A-Z section on page 96 of this booklet.

[www.lindau.de/events](http://www.lindau.de/events)

### SOFIA WIEDENROTH (24)

**Runner-up in Mountain Bike World Championships 2012, 5-time German Champion**

I compete for about 20 to 25 days a month and therefore I'm constantly on the move worldwide. So, it feels even better to return home to Lindau. I love Lake Constance and I am often out on the water – for stand-up paddling, windsurfing or sailing. In the summer, I meet my friends for bathing in the Lindenhofpark. I also like to go to the '37 Grad' cafe at the harbour, because the coffee there tastes great and the view is amazing.



### 'RUND UM' SAILING REGATTA

Lindau's 'Rund Um' is the largest sailing event held on Lake Constance. Every year, 400 sailboats fight to see who can complete the challenging route across the lake as fast as possible. The special thing about it: the mass start in the Lindau harbour takes place towards the west in the setting sun, the boats are out sailing all night. The sailors can win the blue band of Lake Constance in the long-distance regatta, which is organised by the Lindau Sailing Club. The audience ashore can enjoy an entertainment program with a maritime flea market and live music (11 to 14 June 2020).

[www.lindau.de/en/dossier/rund-um-regatta](http://www.lindau.de/en/dossier/rund-um-regatta)

## AUTUMN

### APPLE WEEKS & AUTUMN FOOD AND WINE

When the leaves turn colourful, that's when you can really dedicate yourself to enjoying the culinary delicacies that the Lake Constance region has to offer: both during the Apple Weeks as well as during Autumn Food and Wine local fruit growers, wine-growers and restaurateurs bring the best of the region to the table.

From 19 September to 11 October 2020, the Apple Weeks take place, during which guided tours of orchards and wineries, the tasting of delicious apple dishes and liqueurs, culinary cycling tours, opportunities to join in with picking or to watch the distillation of schnapps and liqueurs, walks and festivals are offered. The participating hotels and restaurants often have special themed offers on which we are happy to advise you.

During the two-week Autumn Food and Wine Festival (10 to 24 October, 2020) there is a variety of delicious events in Lindau, Bodolz, Wasserburg, Nonnenhorn and Bregenz to choose from. Wine, fish, fruit, brandy, herbs, cheese: let yourselves in on manufacturing secrets, participate in guided tours and tastings or pick up tips from the pros in cooking classes.

[www.lindau.de/en/dossier/apple-weeks](http://www.lindau.de/en/dossier/apple-weeks)

[www.lindau.de/en/dossier/autumn-food-and-wine](http://www.lindau.de/en/dossier/autumn-food-and-wine)

### LINDAU'S ANNUAL FAIR

This colourful mix of folk festival, amusement park and merchant's market is a good occasion to pay a visit to Lindau outside the main season: for four days a year around 180 merchants, 60 showmen and thousands of visitors impart a busy and cheerful mood on the island (6 to 9 November 2020). The stalls of the mobile traders are lined up side by side all the way from the pedestrian zone to the churches at the market square. Practical houseware, colourful toys, pretty decorations or fancy craftsmanship – there is something here for everyone. At the promenade, fans of rides then get their money's worth. A romantic carousel ride overlooking the lion and the lighthouse, a wild ride in bumper cars or a nostalgic one on the swing ride – what's it going to be for you?

[www.lindau.de/en/dossier/annual-fair](http://www.lindau.de/en/dossier/annual-fair)





## WINTER

### DAY SPAS

A wellness holiday in Lindau is – especially in the cold, dark time of the year – a balm for the body and soul. The view on the expanse of Lake Constance, the cosy warmth of a sauna, the relaxation after a massage or a cosmetic treatment: all of this can be enjoyed also as a day guest in the following hotels.

- **Hotel Bayerischer Hof** directly on Lindau harbour / island: indoor swimming pool, spacious relaxation area on two levels, sauna, steam bath, caldarium, Kneipp foot bath
- **YachtHotel Helvetia** directly on Lindau harbour / island: exclusive Alpine lounge sauna, Infinity outdoor pool, Japanese ZEN-Lounge, white Lounge with indoor Onsen active pool und anemone temple
- **Hotel Bad Schachen** at Lindenhofpark / mainland: more than 1,000 m<sup>2</sup>-large wellness area, Finnish sauna, organic sauna, Rasul and salt steam bath, indoor swimming pool, fitness studio
- **Relais & Châteaux Hotel VILLINO** Hoyerberg / mainland: ca. 400 m<sup>2</sup>-large wellness and beauty area with oriental ambience, numerous individual offers for pampering

In 2021, the new Lindau thermal bath opens in Eichwald with a lake resort, covered family and sports pool and a large sauna and spa area.

All the offers mentioned above also include an additional one for free – the fresh, healthy lake air, which you enjoy while walking along the shore or through one of the many parks.

[www.lindau.de/en/dossier/wellness](http://www.lindau.de/en/dossier/wellness)

### LINDAU HARBOUR CHRISTMAS MARKET

Snow-capped Alpine peaks in the background, in front of them the lake, where sparkling lights reflect the waterfront, a fairy-tale forest with fabulous figures and real animals: The Lindau Harbour Christmas Market is special in many ways. The market stalls – as well as the many boutiques on the island – go by the credo of ‘quality instead of quantity’: fair trade goods and products from the region make for gifts that keep on giving. On the stage at the harbour, on each Advent day different artists create a festive, lively atmosphere with music and dance, and you can also pamper yourself with seasonal culinary delights (26 November to 20 December 2020, Thursdays to Sundays from 11 a.m. to 9 p.m.). On the small but beautiful market at the Zeughaus, there are all sorts of handmade things to discover on the first Advent weekend.

If you can't get enough of Christmas markets, then you will love this offer: the Christmas ship MS Austria sails between 27 November and 20 December 2020 on Fridays, Saturdays and Sundays between Bregenz and Lindau, where you can in total visit three different markets. Thanks to the ship, you are completely comfortable and don't have to spend any time looking for a parking space.

[www.lindau.de/lindauer-hafenweihnacht](http://www.lindau.de/lindauer-hafenweihnacht)

### ADVENT TOURS (only in German)

Do you want to experience something very special? Then join an island tour or accompany the night watchman on his evening tour of the town. The entertaining history lessons while walking over the festively decorated island are an unforgettable adventure for young and old explorers.

# Highlights of 2020

All events can also be found at [www.lindau.de/events](http://www.lindau.de/events)



<b>FEBRUARY</b>	23.02.	<b>Narrensprung (Carnival)</b>   Lindau island
<b>APRIL</b>	02.04. – 19.04.	<b>International Piano Festival of Young Maestros</b>
	04.04. – 27.09	<b>Paula &amp; Otto: Evolution in Art and Love</b> <b>Works from Paula Modersohn-Becker and Otto Modersohn</b> Special exhibition in the Art Museum at the Island Train Station
<b>MAY</b>	21.05.	<b>Lindau Walking Day</b>
	31.05. – 01.06.	<b>Arts &amp; crafts market</b>   Schrankenplatz
<b>JUNE</b>	11.06. – 14.06.	<b>Rund Um</b>   Lindau Yacht Days & night-time regatta around Lake Constance
	28.06.	<b>25th Lindau Classic</b>   Classic car rally
<b>JULY</b>	03.07. – 04.07.	<b>Komm und See</b>   Wine makers' festival on Lake Constance
	11.07.	<b>38th Lindau Town Festival</b>
	22.07.	<b>Lindau's traditional children's fair</b>
	23.07. – 23.08.	<b>Bregenz Festival</b>   "Rigoletto" by Giuseppe Verdi
<b>AUGUST</b>	28.08. – 30.08.	<b>Lindau Oktoberfest</b>   Ludwig-Kick-Strasse
<b>SEPTEMBER</b>	19.09. – 11.10.	<b>Apple Weeks</b>   on Lake Constance
<b>OCTOBER</b>	04.10.	<b>Sparkasse 3-Country-Marathon</b>   Start at Lindau harbour
	10.10. – 24.10.	<b>Autumn Food and Wine</b>   on Lake Constance around Lindau
<b>NOVEMBER</b>	06.11. – 09.11.	<b>Lindau Annual Fair</b>
	26.11. – 20.12.	<b>Lindau's Harbour Christmas</b>   Thursdays to Sundays from 11 a.m. to 9 p.m.
	27.11. – 29.11.	<b>Zeughaus Market</b>

# Sightseeing tours



How did Lindau's citizens wash their laundry, where were the fish caught? Why does the lighthouse have a clock, and what does the colourful painting on the Old Town Hall symbolize? Which exotic trees grow here and was dear Augustine really so dear? Your guide to Lindau knows the answers to all these questions – and will be delighted to take you on a journey through time after which you will view your vacation destination with different eyes. Listen to stories about defiant towers and defensive ramparts and experience the medieval flair of narrow streets and ancient houses.

## CLASSIC SIGHTSEEING TOUR

### Tour of the most important attractions

- April to October, 90 minutes
- no registration required, € 8 p.p., in German only

## HISTORICAL NIGHT WATCHMAN TOUR

### A staged, historical evening tour

- May to October as well as during the Advent season, 90 minutes
- no registration required, € 8 p.p., in German only

## THE BAVARIAN LIGHTHOUSE KEEPER'S WIFE

### A staged, historical costume tour

- July to September, 90 minutes
- no registration required, € 10 p.p., in German only

## STORY TIME FOR ADULTS

### Readings in the parlour of the Mangturm

- May to October, 60 minutes
- no registration required, € 8 p.p., in German only

## GUIDED TOURS FOR GROUPS

### Individually bookable group tours

- all year round, 90 minutes
- upon prior arrangement (tel. or online), from € 90 per group (German, max. 30 people), € 95 (other languages, max. 30 people).

The guided tours are a suitable way for couples, families or lone travellers to experience the highlights of the island. If you want to explore the island as a group, we offer customized group tours. To arrange one, please contact us by phone or online through the Tourist Information. All tours of Lindau's culture, history and tradition take place in all kinds of weather.

Concrete dates as well as additional information on all offers can be found in the A–Z section on pages 96–98 as well as at [www.lindau.de/stadtfoehrungen](http://www.lindau.de/stadtfoehrungen), [www.lindau.de/maerchenstunden](http://www.lindau.de/maerchenstunden) (both in German) and [www.lindau.de/en/dossier/group-tours](http://www.lindau.de/en/dossier/group-tours) (in English)



**YOU LOVE LINDAU?  
THEN SHOW IT!**

On Facebook as well as on Instagram we regularly post fascinating insights, viewpoints and wonderful views of our town. If you post holiday pictures on Instagram just tag us with @lindau\_bodensee! Your photos will then also be shown in our profile and will also be visible for all other followers.

**Facebook:** @LindauTourismus  
**Instagram:** @lindau\_bodensee



# Renowned artists, high-class exhibitions

---

**L**indau might appear modest next to art metropolises like Zurich or Munich – but the exhibitions of classical modernity are of the highest calibre and easily hold their own when compared with those from large cities. The special exhibitions of Museum Lindau have become an indispensable part of the cultural life on Lake Constance – they reach a wide public beyond the boundaries of the region. Since 2011, Museum Lindau has shown, in special spring and summer exhibitions, works from the era of classical modernity; with original works from Picasso, Chagall, Miró, Matisse, Nolde, Macke and Klee the museum has already attracted around 600,000 visitors.

## ART MUSEUM AT THE ISLAND TRAIN STATION

This prestigious historic building in a central location near the island's railway station in Lindau offers on its ground floor an ideal setting for very personal, focused presentations that enable the viewer to experience an intimate encounter with the art on display. The sophisticated modern lighting technology also makes the exhibition rooms impressive.

## ART EDUCATION AND MUSEUM PEDAGOGY

As an accompaniment to big special exhibitions the new art museum at the island train station offers an extensive program for imparting knowledge, that, in addition to public and privately booked tours for adults also includes guided tours and creative workshops for children and teens of all ages and school classes.

---

## Art Museum at the Island Train Station

Maximilianstraße 52, 88131 Lindau (B)

Tel. +49 8382 274747850

[museum@lindau.de](mailto:museum@lindau.de) | [www.kultur-lindau.de](http://www.kultur-lindau.de)

## 'PAULA MODERSOHN-BECKER & OTTO MODERSOHN – EVOLUTION IN ART AND LOVE'

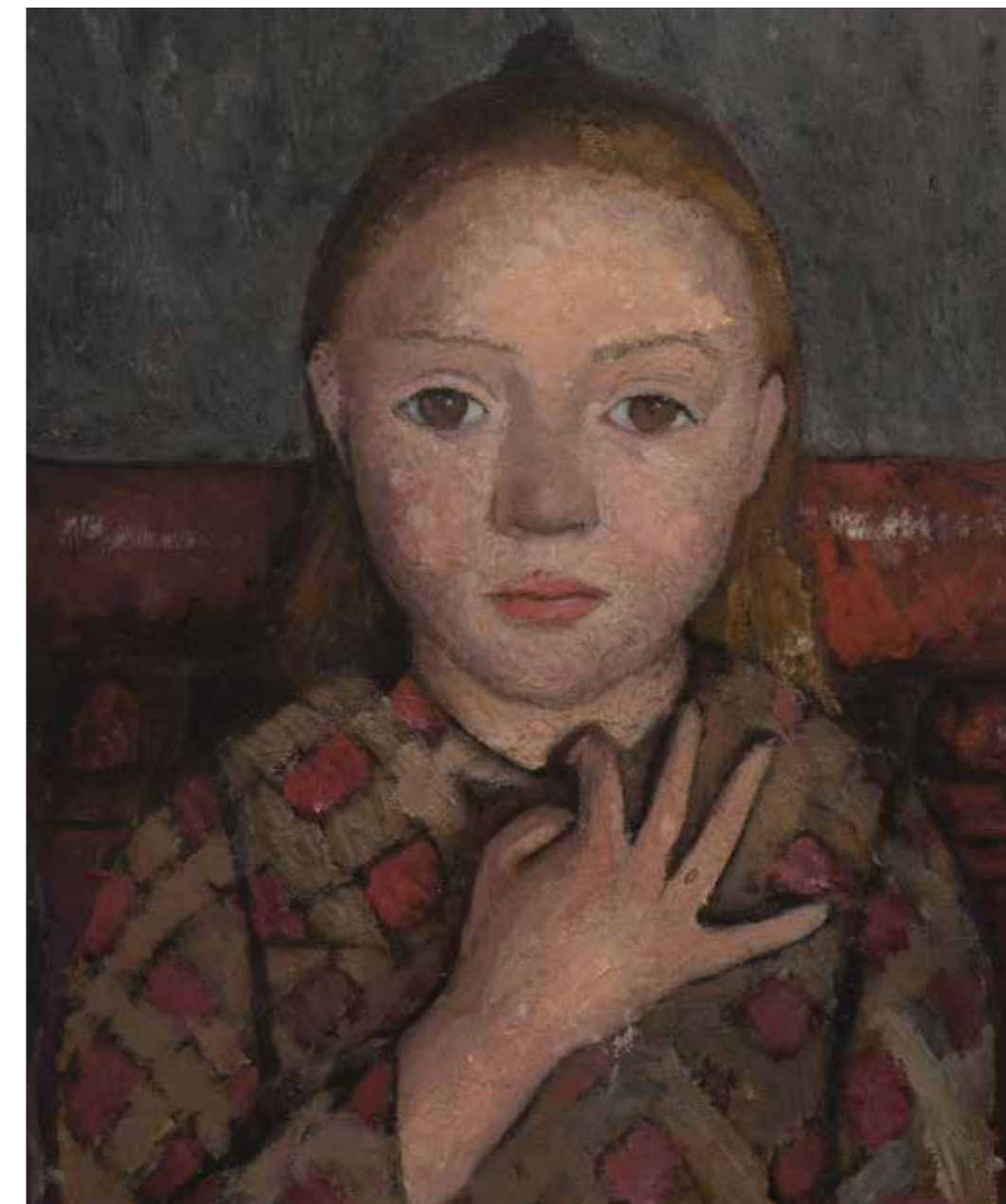
---

**SPECIAL EXHIBITION IN LINDAU 2020**  
**ART MUSEUM AT THE ISLAND TRAIN STATION**  
**04/04/2020 – 27/09/2020**

### PAULA MODERSOHN-BECKER

Portrait of a girl with hand spread in front of her breast, around 1905

© Von-der-Heydt-Museum, Wuppertal / Foto: Antje Zeis-Loi, Medienzentrum Wuppertal



---

*‘I know I won’t live for much longer,  
but is that really a cause for sadness?  
Is a party any nicer because it’s longer?’*

Paula Becker, Diary, 26/07/1900

With works by Paula Modersohn-Becker (1876–1907) and Otto Modersohn (1865–1943) the Art Museum Lindau will next year present the most important German artist couple of the early 20th century and show the fascinating theme of love and art in the transition to modernity. With selected pieces from private collections, art foundations and museums, works by two outstanding artist personalities will be brought into an exciting dialogue. Moreover, for the first time, the Lindau exhibition series will turn its focus to a pioneering female artist of the modern age. The exhibition will be supported by the Paula Modersohn Becker Foundation and the Otto Modersohn Foundation. Lindau’s Art Museum thus continues its series on artists of the modern age.

Otto Modersohn was already an established landscape painter and chief representative of the Worpsweder artists’ colony when he met the young, cheerful and highly talented Paula Becker in 1899. Their art-centred marriage was shaped by deep affection, great mutual respect and an intense exchange about artistic themes. They shared a taste for the progressive painting of the French and each one applied it differently in their own pictures. While Otto painted great mood pictures of nature, modelled after the French plein air painting and preferably worked in rural seclusion, Paula was especially interested in the presentation of people in open contact with colours and simplified forms.

She, too, valued the peaceful landscape around Worpswede, but again and again she was drawn to the pulsating art metropolis of Paris, where she evolved her style and created masterpieces of early modernity. Paula Modersohn-Becker is considered a pioneer of modern painting, and self-confidently developed her unique imagery in an art world dominated by men.

The exhibition impressively illuminates how exceptionally modern this artist relationship was for the time around 1900, and how Paula and Otto always succeeded in bravely meeting the inevitable challenges of the times before Paula’s premature death in 1907 at the age of only 31 years and at the height of her prolificity.



**Paula and Otto Modersohn in their garden  
in front of the veranda, around 1904,  
© Paula-Modersohn-Becker-Stiftung Bremen**

The team of the Art Museum is working together with the two foundations on an exciting special exhibition to present as many important and original loans as possible from the two artists. Recent exhibitions from the two artists could be seen in large, international houses in, e.g., Bremen, Paris, Karlsruhe and Hamburg. With that, Lindau will be putting on also in 2020 a high-profile show as part of the art events in the larger region and it will surely attract lovers of culture from near and far.

---

*‘This mutual give and take is wonderful;  
I feel how I learn from her and with her.’*

Otto Modersohn, Diary, 15/06/1902

**OTTO MODERSOHN  
Summer landscape with Elsbeth and Paula Modersohn, 1902,  
© Paula-Modersohn-Becker Foundation, Bremen**



# Rich diversity on the stages of the town

Lindau's cultural programme is as diverse as its inhabitants and guests.  
There is something on offer for every age group.

**A** centuries-old small stage on the island stands in close proximity to a state-of-the-art event location; international stars as well as local greats gather at the countless events. We present the main venues here – and wish you a lot of fun and great entertainment!

## MUNICIPAL THEATRE

The Lindau Theatre has found its home in a former monastic church from the 13th century: the listed building was rebuilt after World War II, is handicapped-accessible and can fit about 700 guests. The city does not have its own ensemble, though each season, renowned artists such as Iris Berben or Senta Berger as well as ensembles like the Bavarian State Opera or the Deutsches Theater Berlin put on well-attended guest performances on the island. Also, national and international ballet companies inspire audiences again and again. In addition, chamber concerts as well as cabaret events are offered.

[www.kultur-lindau.de](http://www.kultur-lindau.de)

## PUPPET OPERA

The Lindau Theatre, opened in 1951, is also since summer 2000 the fixed venue of the Lindau Puppet Opera – the only puppet stage in Germany which plays exclusively musical theatre. In addition to operas like 'The Magic Flute', 'La Traviata' or 'Carmen', also two operettas, the ballet 'Swan Lake' as well as a children's play are shown per season. After performances, guests are allowed to look behind the scenes and ask the ensemble questions. Should you wish to attend one of the approximately 120 performances per year, we recommend you to buy the tickets as early as possible. The minimum age for visitors is five, the recommended age eight years.

[www.marionettenoper.de](http://www.marionettenoper.de)

## INSELHALLE CONVENTION CENTER

The Lindau Inselhalle offers around 4,100 m<sup>2</sup> of space that are used for the most diverse events: concerts, musicals and ballet performances, cabaret and readings, multimedia shows and fairs ... the list goes on and on. In addition, in the outdoor area events such as street food markets or open-air parties take place. The program of the Inselhalle includes a wide range of events and offers the best entertainment for young and grown-up guests.

[www.inselhalle-lindau.de](http://www.inselhalle-lindau.de)

Tickets for many of the events can be bought at the Tourist Information at Alfred-Nobel-Platz 1 or online at [www.lindau.de](http://www.lindau.de).





### HANNAH VOGEL (12)

Young singer of jazz and popular music, plays violin and piano

I really like the Entenberg – you can walk comfortably up there without meeting too many people on the way. The route is not too exhausting and there are only a few steps to tackle. At the top, you have a beautiful view of the whole of Lindau, and it's a great place to watch the sunset. Farming is still going on all around, and with a bit of luck you can see cows and horses. I also really like the Mangturm at the harbour – especially if Rapunzel's braid is hanging there. And right next door there are two great ice cream parlours!



### CASINO

The exposed location of the casino – right on the shore at the entrance to Lindau Island – allows one a wonderful view over Lake Constance and the mountains. The building also has a lot to offer from the inside – for example, on the 'CASINO Bühne' in the foyer. Events take place here monthly in a lounge-like club atmosphere, such as comedy and cabaret, concerts of Swabian songwriters or dance evenings. Following all events, guests have free entry to the game rooms of the Casino.

[www.spielbanken-bayern.de](http://www.spielbanken-bayern.de)

### CLUB VAUDEVILLE

If you are looking for something alternative, you will definitely find something in the programme of Club Vaudeville. The venue does not just organise the Lindauer Stadtfest on the island as well as open-air parties in Toskanapark, but also brings internationally well-known bands to the city. Around 70 events are offered every year at the club – the spectrum ranges from ska to punk, metal, hardcore, pop, rock and blues up to rockabilly. Cinema and poetry slam evenings as well as cabaret events are also on the program of the club that has been inspiring the young and young at heart with cultural and political topics for 40 years now.

[www.vaudeville.de](http://www.vaudeville.de)

### ZEUGHAUS

The Zeughaus offers a stage for national as well as international artists: the cabaret theatre plays host to bands and soloists of all genres as well as cabaret artists and local theatre companies. In summer, concerts take place on the historic Schrankenplatz in front of the Zeughaus; in winter, you can buy exclusive creations from artisans, artists and designers at the Advent market.

[www.zeughaus-lindau.de](http://www.zeughaus-lindau.de)

### JAZZCLUB

The jazz cellar of the 'Zum Zecher' inn is almost an insider tip: the small room with space for around 40 listeners provides just the right ambience for club concerts that are offered from September to May by Jazzclub Lindau. From June to September, the non-profit organization organizes open air concerts, e.g. at the Teresa Deufel winery. Young jazz bands as well as established professionals can also be heard at jazz concerts on the back stage of the city theatre and in the Zeughaus.

[www.jazzclublindau.de](http://www.jazzclublindau.de)

# Space for encounters, room for insights

Since its reopening in 2018, Lindau's Inselhalle has already received thousands of conference participants and guests from all over the world. The modern conference and event location is not only an architectural highlight of the town.



**I**ts location directly on Lake Constance is what makes the Inselhalle so special: whether during a coffee break overlooking the water in the Seefoyer or during a relaxed get-together in the big, light-flooded main foyer – here all visitors enjoy amazing views. Whether for assemblies, congresses and fairs, meetings and company celebrations or cultural events: the bright, spacious rooms and halls can host a total of 2,000 participants.

The heart of the versatile building consists of three combinable halls, of which the Great Hall is ideal for plenary events with up to 1,100 guests. Ten conference rooms are grouped around this core on the ground floor and two more in the basement. Thanks to a modular concept, 46 possibilities for variations will be created for events of different types and sizes.

The Inselhalle, which was designed by the Munich architectural office Auer Weber, stands out as a highlight of modern architecture, which is perfectly integrated into the island: so, e.g., the distinctive polygonal roof with its copper colour picks up on the optics of Lindau's old town; generous glass surfaces provide a view of the lake and the surrounding nature. The 2,500 m<sup>2</sup>-large Therese-von-Bayern-Platz can be used as an additional space for activities at many events.

The DECK12 restaurant right next to the Inselhalle can seat around 120 people inside and 130 people outside. Here you will be spoiled with seasonally inspired dishes made from regional organic ingredients. Vegan and vegetarian dishes are of course also available in addition to many meat and fish specialties, as well as coffee and cakes.

There is a parking garage with about 400 parking spaces and bike boxes opposite the Inselhalle.

## LINDAU NOBEL LAUREATE MEETINGS

Since 1951, more than 30 Nobel laureates come annually to Lindau to meet with over 600 junior scientists from the the whole world. The meetings are alternately devoted to medicine, physics and chemistry; their goal is intercultural and intergenerational exchange of knowledge and experience. Lectures, discussions, podium discussions and Master Classes make up the bulk of the program.

## LINDAU PSYCHOTHERAPY WEEKS

The Lindau Psychotherapy Weeks have been held annually since 1950 and are among the world's largest events in the field of psychotherapy. Nearly 4,000 medical and psychological psychotherapists and members of related professions generally visit one of the two weeks of the conference in April. Lectures, presentations and seminars are offered.

## RELIGIONS FOR PEACE

From 20 to 23 August, 2019 the world convention of Religions for Peace took place in the Inselhalle for the first time. During the congress, 900 people from 100 nations exchanged ideas about how the dialogue between religions can promote peace. In the Luitpold-park on the western part of the island, a 7.5-meter-high wooden ring was erected as a permanent symbol of peace between the religions.



# Here's to the town, freedom and life



The traditional Children's Festival is celebrated throughout the entire town every summer – since centuries it has carried great meaning for Lindau's citizens.

**I**f you happen to be Lindau at the end of July and hear cannon shots one morning, do not worry. Everything is fine – and has been for 365 years now. Always on the last Wednesday before the Bavarian summer holidays, Lindau celebrates its Children's Festival; for one day the city is in celebratory mood. At 6 o'clock in the morning the cannon shots mark the prelude to the festivities – then festively dressed children stream from all parts of the town over the pier onto the island. First, a service is held, then the little ones march to the Old Town Hall accompanied by drummers and minstrels. Floral wreaths, flags and costumes: Bismarckplatz presents a happy, colourful picture.

Introduced by a fanfare, the song 'Lindau hoch' rings out from hundreds of throats – a real goose bump moment. Afterwards, the mayor gives a speech about love for one's home and traditional values, and children from annually rotating schools present a Thank You poem. After the ceremony, the children receive their Butschelle – a sweet raisin pastry only available on this day – from different places around town, as well as coupons for the rides.

In the afternoon, the children's party moves to different parts of town where the Festival associations offer traditional children's games and carousels and marquees invite young and old to party.

## **SUBJECTS WERE SUPPOSED TO ADOPT A LIFESTYLE AGREEABLE TO GOD.**

The roots of the Children's Festival go back to the middle of the 17th century: in 1655, the city's legal advisor Dr. Valentin Heider, who was also chairman of the church and school council, assumed responsibility for the festive arrangement of school sermons in his capacities as magistrate. These were aimed primarily at the parents of schoolchildren, and their goal was to convey the meaning and necessity of the school system and of attending school. A modest way of life and respect towards teachers were also called for.

The Children's Festival also celebrates the freedom of the town, which was besieged by the Swedes during the Thirty Years' War. Dr. Valentin Heider represented Lindau and several other cities in the peace negotiations of Münster and Osnabrück – it is thanks to his diplomatic skill that Lindau regained its old rights as a Free Imperial City.



**THE FESTIVAL HAS FOLLOWED  
THE SAME PROCEDURE FOR CENTURIES**

In 1662, the characteristic elements of Lindau's Children's Festival were determined, and these are strictly followed up to the present day: an early rise at 6 a.m., a festive service, a procession with flower arrangements and banners, the serving of Butschellen (from the Latin 'Buccella', small morsels).

On 22 July 2020, the Lindau Children's Festival will be held already for the 365th time. For locals as well as guests, it's a special experience every time.

---

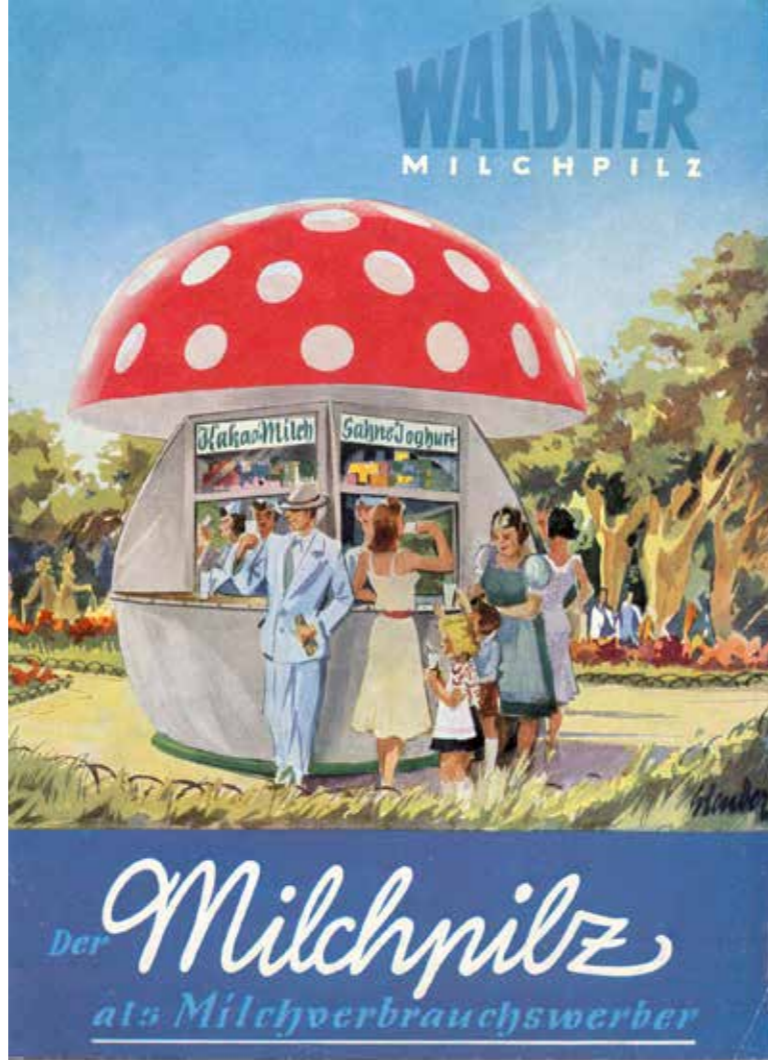
*'To Lindau!  
How you make us happy!  
Saying your name  
brings such joy  
to our hearts.'*

Song from the Children's Festival



# Cute cult object: the Milchpilz

This construction has a long tradition in Lindau. We reveal all about this little kiosk and its history.



**H**ave you ever heard of the ‘Milchpilz’ (milk mushroom)? No, it’s not something that grows in the forest and it also isn’t an illness – it is in fact a kiosk, and one with cult status. The small toadstool-shaped huts were designed to promote the sale of milk and dairy products. Today there are only eight of them worldwide – one of them in Lindau.

The Milchpilz originated in the 1950s: the economy was booming and people were going more and more often to bars and cafes. Alcohol was only allowed from the age of 21, however, and from the point of view of the dairies not enough dairy products were being sold. There was a need for an advertising concept. The first ‘advertiser for milk consumption’ was presented at a meeting of the ‘Metropolitan Milk Utilities’ in May 1952 in Bayreuth: a white, prefabricated wooden building in the form of a toadstool, produced by Hermann Waldner KG from Wangen in the Allgäu. The jolly-looking, easy to set up and practically designed kiosk found the approval of the industry and was mass-produced from that time on. Customers hailed not only from Germany, but also from Switzerland, Austria, Italy, France, Belgium and Greece. In lidos and parks, at sports fields and on highways the white construction with its bright red roof now attracted guests. The main products sold were milk and milk beverages as well as ice cream and non-alcoholic beverages.

Probably because of its proximity to the production site in the Allgäu, Lindau received the first of the serially produced milk mushrooms: On 13 May 1952, the Kiosk was set up near the Toskanapark. Two years later, it was moved to Sina-Kinkelin-Platz on the island where it is still stands today. The Milchpilz is today operated by Theo Kiapidis and Jessica Bühler. ‘I grew up in this neighbourhood together with the Milchpilz – as a little boy, I always bought ice cream or sweets here’, recalls Kiapidis. ‘So, when the Milchpilz was made available for lease in 2014 by the previous owner I couldn’t help it: I had to go for it.’ In 2016, the former bar owner reopened the kiosk – under the premise of gently connecting the traditional with the new. ‘What makes the Milchpilz so popular is the nostalgic aspect’, says the 39-year-old.

The charming, characteristic design of the 50s was therefore preserved – including old advertising banners, soft ice cream and the large selection of sweets. New additions include self-created snacks like hot dogs as well as some regional products. And the mix is well received – both by the tourists as well as the locals. The majority of visitors are regulars who enjoy the cozy atmosphere underneath the big chestnut trees.

A total of 49 milk mushrooms left the factory in Wangen – the last one went to Mannheim on 21 November, 1958. Another Milchpilz is still operating in neighbouring Bregenz (Austria/Vorarlberg). The other mushrooms are in Wangen (Baden-Württemberg), Regensburg (Bavaria), Mardorf and Rosengarten (Lower Saxony), Oldendorf (North Rhine-Westphalia) and in the Austrian capital Vienna. Due to the construction work for the Horticultural Show, the Milchpilz is only accessible to a limited extent in 2020.

Through its proximity to the western part of the island – a popular space for swimming and barbecues – many guests happen upon the architectural gem by chance. Theo Kiapidis and his partner Jessica Bühler patiently tell those who are interested all about the listed building – and why they have both lost their hearts to Lindau’s Milchpilz.

#### THE MARVELLOUSLY SPACE-EFFICIENT MILCHPILZ

Four meters high, 3.15 meters in diameter: the usable space inside the Milchpilz was and is limited. The standard model from Hermann Waldner KG had a glass door, four sliding windows, three built-in tables and four shelves and could be purchased for 6,623 Deutsche Mark. Accessories such as a built-in refrigerator, a whipped-cream dispenser and an ice maker were optional.





# CRAFT, TRADITION AND PASSION: FOR THE LOVE OF COFFEE

The Hensler family settled on Lindau Island 97 years ago. Since then, coffee beans from all over the world are roasted here using traditional methods, in which one thing counts above all: time.

**T**here are days when a very special aroma wafts over the marketplace on Lindau island – to some it is reminiscent of toasted bread, to others of popcorn, and some know where it really comes from: freshly roasted coffee. Following the enticing scent will take you to the small 'Kaffee-gässele' and to the Hensler family. Inconspicuous and hidden this coffee roasting house may be, but it has an exciting and far-reaching history.

In 1871, Anton Hensler opened a grocery store in Wangen in the Allgäu, which in the course of decades became a supermarket company and later a coffee specialty roasting house. In 1923, the family business moved to Lindau island. Since then, coffee beans from all over the world have been processed here. 'We have at any one time varieties from about 35 countries in stock and we produce about six to seven tons of coffee per month', explains Elisabeth Hensler. The 36-year-old is the head of the little team serving a big market: regional restaurateurs, hoteliers and bulk purchasers as well as partners and private customers from across Germany refer to the total of about 80 varieties of coffee from Lindau island. But what makes it so special? First, there is the long-standing relationship of Hensler to her suppliers. 'Our company can rely on nearly 100 years of experience and access to a huge network – so we know from which farmer on which finca we get the best beans', says Elisabeth Hensler. On the other hand, it is the traditional roasting process that gives the coffee its unmistakable taste. While coffee beans in large industrial production are on average only heated for three minutes; here they are roasted for about 20 minutes – and in a massive cast-iron drum roaster that has been provid-

ing reliable service for around 40 years. No digital fill indicator flashes here, nor do any electronics control the temperature. Elisabeth Hensler operates three small levers to control the number of gas flames and to increase the temperature, and heaves a further heavy lever up when it's time for the drum to release its beans. The colossus holds around 42 kilograms of raw beans, the drum rotates evenly at temperatures of 180° C to 230° C. A so-called 'sampler' is used to check the condition of the originally green beans.

About 300 chemical changes take place in the bean per roast, a coffee bean has up to 1,000 flavours', explains Elisabeth Hensler. In order for these to develop and at the same time for the acid fraction to be reduced, the beans need time – and someone with a lot of experience who can properly judge the operation of the machine. 'At the end of the process, it's about seconds', says Elisabeth Hensler while carefully inspecting the beans. 'Just a few moments more roasting time or minimal temperature deviations can cause big differences in aroma – and that would be especially problematic for bulk buyers, of course, as they always want consistent taste.' And how does she know when the right time is reached? 'This is down to years of experience – you can see, smell and hear it', the boss laughs. She has been bequeathed these sensory perceptions both from her grandfather and the master roaster, who worked in the company for 50 years.



*The formula  
for good coffee?  
'Minimal acidity,  
maximal aroma'*

**ELISABETH HENSLER**

has a degree in business administration and is the daughter of the company owner. In her job, the 36-year-old makes good use of her business knowledge, craftsmanship and family traditions.

**The Hensler Speciality Coffee Roasting House**

is open from Monday to Friday from 7 a.m. to 12 p.m. as well as from 2 p.m. to 5 p.m. If you drop by in the morning, you can watch the roasting process.

The graduate in business administration originally had very different ideas for her professional life: after studies in Nuremberg, she worked at a business consultancy, managed big budgets and wanted to discover the world. 'But in 2010, the question came up at home of who was going to continue the company.' Elisabeth Hensler opted for family and the continuation of tradition – and now just gets the world to come to Lindau.

Every three weeks new goods arrive on the island from the Hamburg container port; several pallets full of 60 to 70 kilo-heavy bags are then dragged through a small delivery hatch to the first floor. The workforce numbers five permanent employees and two temporary workers, which is as far away from a modern, stylish company as a Colombian coffee plantation is from Lindau harbour. 'We are not a glossy showpiece company', says Elisabeth Hensler categorically, 'We use traditional craftsmanship – and a lot of passion.' All of her employees are lateral entrants to the

**FROM ALL AROUND THE WORLD**

the raw coffee beans arrive in Lindau. The individually designed jute sacks are great for crafting and for upcycling. Bags can be picked up for free or can also be sent out if the recipient covers the postage costs.

work, there is no classic coffee roaster apprenticeship. 'If you have a love for coffee, are skilled and are not afraid of heat and technology, then you will be highly qualified for this job.' And the dream of a great career? 'I have fulfilled that dream anyway – even beyond my expectations', says Elisabeth Hensler. 'I can do physical work in my job, be creative and develop new varieties or go on tasting trips. And I have a product that you can see, feel, smell and taste. Our coffee makes both me and our customers happy – and you can't achieve any more in your job.'

# Green is good for you

---

With a circumference of just under 270 kilometres, it goes without saying that there are many beautiful spots on the shores of Lake Constance. But Lindau is characterised by another special feature: the entire urban area with its area of 33 km<sup>2</sup> boasts a large number of green oases.

## **HORTICULTURAL SHOW TO UPGRADE THE ISLAND INTO A GARDEN BEACH**

In 2021, Lindau will be transformed into a garden beach: from the end of May to the end of September, the horticultural show will enrich the whole city and ensure an overall experience that can be described as sensual. Gardens and flowers will mingle with waves and peaks as an intoxicating backdrop. The steps on the rear of island make it easy for water lovers to get into the cool water. Not such a big fan of the getting wet? Then simply stay sitting above on the steps and dream in the sunset. It's always beautiful.

The horticultural show on the island is only a stone's throw away from the lion and the lighthouse. Whether arriving by train or ship – the garden beach will reach the tracks and the jetty. Fish and wine, vegetables and beer, cheese and bread will be on offer – and all from the region. In the old railway buildings, the epicurean region lures all-comers with all the pleasures the palate craves.



**W**ith centuries-old trees, spacious lawns and the often-colourful plant diversity, Lindau's parks and gardens are popular with visitors in all seasons.

If you are here in summer, and want to leave the bustle and heat behind you and relax in nature, we recommend a walk in the **Rickenbacher ravine**. Here, a wild stream has made its way through the forest, and you can complete a longer or shorter tour along the water in cool, green surroundings.

Also on the mainland is the **Uferpark Wäsen** – a vast nature reserve, which borders directly on Lake Constance. Here, you can walk along the shore, collect stones and driftwood or just enjoy the sweeping view of the water over the mountains. A little detour takes you to the **Wankel Institute**, which although accessible only from the outside, is architecturally highly interesting: the former technical development site of Felix Wankel is based on a skeleton construction, which confers a lightness and elegance on the lime green building with its Plexiglas windows.

Another wonderful place to allow room for your thoughts is the **Lindenhofpark** on the lakeshore in Bad Schachen. The impressive ensemble of stately villa and perfectly landscaped park makes for an impressive picture, and especially in the off-season the quiet, its peaceful mood is almost overwhelming. The 'Gartendenkmal Lindenhofpark' association has, in an honorary capacity, developed a part of the terrain into a garden redesigned according to a historical model – this includes the construction of a romantic, vine-covered pergola.

If you now head towards Lindau island, you will reach, already before the bridge to the island, the **Toskanapark**. This is where the city council of Lindau has its seat – the Villa Toskana was designed at the end of the 19th century as a symmetrical system with one main and two outbuildings. Still today, the rondel with its water fountain, the wide staircase in the seawall and the shady trees retain something of the flair of the time.

Upon crossing the bridge and arriving on the island you will be welcomed by colourful flora on the right-hand side: The **Stadtgarten** has vegetation and blossoms in abundance. In addition to the beautifully landscaped flower beds, one can also admire exotic plants like ginkgo, palms, bananas and magnolias. A metal relief of the island also offers an interesting bird's eye view and can give you a good overview.

To the left of the bridge at the casino the **Maximilianschanze** opens up a view of the lake: from here you can catch sight of the neighbouring town of Bregenz as well as the Austrian and Swiss Alps. On the meadow, which has access to the lake, old chestnut trees and elms provide welcome shade in the summer months – a great place for a picnic and a refreshing bath.

Last but not least, the **western part of the island** invites you for a swim, a walk and simply to enjoy. Even though this area is currently being rebuilt in the context of the Landesgartenschau 2021 (horticultural show) and is therefore not consistently accessible everywhere, it's definitely worth stop-

ping by and seeing how another space to experience nature is being designed. Especially the Luitpoldpark, home to corkscrew black locusts as well as a dawn redwood tree, is a real green gem. The park is also home to the 'Ring of Peace' sculpture by the artist Gisbert Baermann. The 7.5-meter-high wooden ring was inaugurated on the occasion of the World Assembly of Religions for Peace in August 2019 and serves as a permanent symbol of peace between religions.



#### The 'Lindavia' magazines

Tracing stories, introducing you to personalities and bringing Lindau that little bit closer to you: that is the goal of 'Lindavia' magazines on the topics 'Parks & Gardens', 'Water' and 'Peace'.

Download & order of free copies:

[www.lindau.de/downloads](http://www.lindau.de/downloads)



#### TONI NEUMANN (37)

**Chef de Cuisine in the VILLINO Restaurant, which has been awarded a Michelin Star**

As a top chef, from some point in your professional life you're essentially teaching yourself. The trick is to find the talent and passion that are already there inside me and just waiting to be discovered. I can best do that in quiet, peaceful places – for example, in the woods or while picking wild garlic on a meadow. Around Lindau, there are many such places to go where I can dive into nature and breathe its scent – for example, in Lindenhofpark directly on the lake.

### CLOSE TO NATURE

Whether on a road bike, touring bike or e-bike – the Lake Constance region offers optimal conditions for an active holiday on two wheels. Level, well-developed bike paths along the lake, narrow roads through the hilly hinterland, demanding trails with considerable height profiles: there's a suitable route for everyone.

On the island we ask you to cycle only in the designated areas and to park your bike at the designated stations. Public bicycle stands are, e.g., available at the main station (with lockable luggage compartments), at Alfred-Nobel-Platz (entrance Ludwigstraße), at the entrance to Maximilianstraße, in Schafgasse and near the market square. Additionally, 28 bicycle garages for 24-hour rental are available at the P4 parking garage at the Inselhalle (Zwanziger Straße 6; with lockable luggage compartments). Ten boxes are equipped with power connections for the charging of batteries. Further charging stations can be found at the Tourist Information (Alfred-Nobel-Platz 1) as well as at the Lindenhof beach café. If you are not travelling with your own bike, you can of course rent one at, among other places, Fahrrad Unger, Der Radgeber, Radsport Jausovec, Radinsel as well as on the campsite of the Gitzenweiler farm and from Lindau's youth hostel.

[www.lindau.de/en/dossier/cycling](http://www.lindau.de/en/dossier/cycling)



## AT YOUR SERVICE

Many hardworking people exert themselves day in, day out to make Lindau an attractive vacation destination. We would like to introduce some of them to you.

### THOMAS KARG & MANFRED OBERHAUSER

Harbour Masters

From April to October, it's high season for the two harbour masters: 140 berths for sailing and motorboats are available in the harbour directly at the lighthouse, another 270 in the 'small lake'. The two are constantly on the go 12 hours a day to ensure that every guest has a space to dock, that the boats are tightly moored and that the facilities are safe and clean. Up to 50 boats per day land in the big harbour and in the 'small lake', it is almost twice as many. 'We have the best job in the world', the two agree. 'If you anchor in the Lindau harbour, you're right in the middle of the action – and you also have a wonderful view of the mountains and the lake.'



### SABINE WEGENER-LAUSBERG

Employee of Tourist Information Lindau

Where can you go swimming here? When are cruises offered? Is there a free room available for tonight? Sabine Wegener-Lausberg knows the answer to these and many other questions: together with six other colleagues she has been competently advising guests at Tourist information Lindau since 2017. In high season – i.e., from July to September – around 250 guests a day pass through the Tourist Information; the phone rings from morning until evening, and emails need to be answered. 'Although it sometimes gets hectic, I really enjoy working here', enthuses Sabine Wegener-Lausberg. 'I love Lindau and the lake and like being able to tell our guests what they can see and experience here. In addition, the vast majority of visitors are relaxed and in a good mood – they're on holidays after all. And if you haven't yet reached relaxation mode, we can also help you with that.'

### CLAUDIA KISTLER

Tree inspector at Garten- und Tiefbaubetriebe Lindau (GTL)

From A for Aeschach to Z for Zech: The GTL makes sure that the garden city of Lindau lives up to its reputation as a flourishing, green oasis. The city gardeners look after a total of 135 hectares of green space – and in every season. In the spring they plant about 70,000 plants, these are joined by a further 45,000 that are part of the summer arrangements. The 5,000 street trees and 1,000 park trees also need to be looked after. One of the people responsible for this is Claudia Kistler, who, being a tree inspector, has a trained eye. 'I check the trees for so-called suspicious circumstances, for example, snapped off branches or fungal attack', she explains. 'Especially after storms or wet snow we often have to respond quickly.' Felling trees also requires a degree of sensitivity: 'We always try to reconcile the wishes of our citizens and our technical know-how with our responsibility for safety – and thus to arrive at the best result for all', says the 40-year-old. 'The beauty of this job is that the fruits of your labours are always right in front of your eyes.'



### HERBERT GRÜBEL

Captain with the Bodensee-Schiffsbetriebe (BSB)

On average, almost 4 million guests sail annually on a passenger ship on Lake Constance – more than half of them with a ship from the Bodensee-Schiffsbetriebe BSB. The company, also known as the 'white fleet', operates 13 ships and has about 190 employees. Herbert Grübel is one of them – for 40 years now he has been a captain on ships sailing on Lake Constance. 'I have of course experienced a lot in all these years: heavy storms, great sunsets, countless lovely passengers – and the odd few that haven't behaved themselves', says the 60-year-old, who as captain is responsible for the safety of his guests. 'That's the great thing about this job: you're an engineer, tour guide and host all in one.' Herbert Grübel's shifts are between nine and 13 hours long – of course, also on weekends and holidays. 'And I still love this job – I was born on the island of Lindau, my roots are in Lake Constance, and being a captain is a real labour of love for me.'

### ALFRED RUNDEL

Town cleaner with the Garten- und Tiefbaubetriebe Lindau (GTL)

Here an empty coffee cup, there a styrofoam bowl with leftovers ... even though the Lindau urban area has around 250 public waste bins – almost 100 of them on the island – a lot still lands next to them. That the city is still clean and attractive is thanks to, among others, Alfred Rundel. 'From 6 a.m., I empty the public waste bins and collect all leftovers in the streets and alleys together with my colleagues', says Rundel. The employees of the GTL are also responsible for refilling the ten stations with dog waste bags.

'Of course, we also have to look after the full bags – especially in the summer we have to be ready to put up with some unpleasant smells.' That the 61-year-old still loves his job is also due to the appreciation that he receives from passers-by. And if he could have one wish? 'Then it would be that people don't put their waste next to a full trash can, but that they simply take it to the next one that still has capacity. And: If you crush big pizza boxes, then even those will fit in the waste containers.'



*Lindau is beautiful –  
because these and  
countless other people  
make it so.  
For that we want to give  
heartfelt THANKS!*



# Teeing off with a tableau

---

Every year, our author tests a different pastime for you – after stand-up paddling and canoeing in previous years, this time she tried golfing at Lindau's Bad Schachen Golf Club.

During the golfing season from March until November, trial classes are offered on the 1st and 3rd Sundays of the month. The training sessions are free of charge; the equipment is provided by the golf club.

**W**hat did par and handicap mean again? Can you actually injure yourself playing golf as a beginner? And: What do I wear?! These were the questions that were going through my mind when I got the instruction to test golfing. I was hoping that Achim Steinfurth – golf pro, board member of the Golf Club Lindau-Bad Schachen e.V. and therefore expert on the supposed ‘Sport of the Privileged’ – would be able to answer them.

‘So let’s have a look at what so many think they are experts on’ he smiles, placing me and my concerns into one of the sleek electric carts and driving off. The 18-hole course on the outskirts of Lindau is 65 hectares in size and was designed by architect Bernhard von Limburger in the 1950s. The finishing touches were then applied by the internationally renowned Lindau landscape architect Kurt Rossknecht. ‘It’s sometimes said that golfers disfigure nature,’ says Achim Steinfurth, ‘but a good designer orientates him- or herself to what’s there.’ In this case, that means gentle hills, small valleys, elongated straights and an amazing view at hole 17. ‘The design of our course is 90 percent natural; only the tee boxes, bunkers and greens were created’, explains Steinfurth. ‘See those flower meadows and the small streams? You can also just go for a walk here if you like – just not on the greens.’

Because the green – the meticulously maintained lawn at the end of each of the 18 fairways – is the holy spot for golfers. The grass there is cut down to a height of three to five millimetres; in the main season eight to ten workers are employed for its daily upkeep. The scarifying, aerating, sanding fertilising, mowing and rolling of 400 square meters – greenkeeping is a science in itself. The reward for all this trouble? From March to November you can enjoy a first-class golfing experience (if there is no snow, for even longer), and the ball will roll particularly well on the green.

Speaking of which: there are of course countless variants of this little ball, that must be at least 42.67 mm in diameter and can weigh a maximum of 45.93 g. In the same way, there is also a wide selection of golf clubs – they differ, among other things, in the length of the shaft, in the angle or in the material. I learn all of this after we have circumnavigated the complete golf course once – including a short stop at the so-called ‘halfway-house’, which after nine holes, gives the players the opportunity to have a drink and to pause for a brief chat.

But now, at the tee-off hut on the driving range, we finally get down to business: I’m supposed to hit my first balls. Aligning the feet, tilting the upper body, correcting the arm posture – check. Placing the ball on the tee, visualising the trajectory, practicing the swing – all good. Setting sights on the goal, swinging back, hitting the ball – off target. I swing vigorously into fresh air. Again. And again. ‘Don’t worry, that’s normal’, Achim Steinfurth, who first played golf at the age of 12, assures me. ‘I topped up my pocket money by caddying for a player’, he remembers, while I continue trying to hit the ball. ‘Of course, it’s a question of technique – but also concentration’, reveals the professional. So, it’s not primarily about strength, but rather about skill and feeling.

Can you hurt yourself by hitting the ball in an awkward manner? ‘Not really, not as long as you do a bit of warming up and stretching first. Back pain or other problems are more down to incorrect technique or overdoing it’, says Achim Steinfurth. So, this worry of mine at least is eased – I keep swinging the club. And lo and behold: when I block everything out – the pro next to me, the video camera documenting my progress and my own ambition – it works. My first golf ball is whizzing through the air! ‘It flies’, I rejoice, and now I understand what I heard on my tour of the course: that it is a sublime feeling when the ball soars through the air on its long-distance travels. ‘Now imagine, you are doing this in the morning, when it is still quiet and nature is just waking up...’ enthuses Achim Steinfurth – and I can understand him.



Before my arms are worn-out by the unfamiliar movement, my training session is alas already over. Completing an entire round here will mean you will have walked ten kilometres; a professional needs 71 strokes to play all 18 holes. And all this with only moderate physical stress and a regular heart rate – no wonder then that golf is seen as a sport for old men? ‘Nonsense’, laughs Achim Steinfurth. ‘Our club has 950 members and the youngest is just four. Golf is a sport for young and old, and a delightful hobby at any age.’ And what about the ‘expensive’ and ‘elitist’ tags? ‘People on average wages can now also afford the

annual fee. What’s important is that you integrate into the community and treat each other with respect.’ An individual sport that is based on consideration, courtesy and graciousness – it sounds contradictory, but actually describes golfing quite well. And this somehow closes the circle back to the last of my three original questions: the right clothes. ‘Wear casual clothing in which you feel comfortable’, Achim Steinfurth had recommended in advance, ‘e.g., comfortable trousers, sports shoes and a polo shirt.’ Sport, but with style, respect and attitude – this is golf. And aren’t these qualities very suitable for the present time?

#### PAR & HANDICAP

The abbreviation ‘par’ stands for ‘Professional Average Result’ and denotes the ideal number of strokes required to complete a whole course. The ‘handicap’ allows comparison of players of different strengths. It represents how many extra strokes a player needs compared to a professional golfer to complete all holes.

In the photos you can see Stefan Gertz – head of the ‘Golf Academy Bodensee 360’ in the Golf Club Lindau Bad Schachen e.V. As a member of the Professional Golfers Association (PGA), he only needs the minimum number of 71 strokes for the 18 holes in the Bad Schachen Golf Club, so his handicap is 0.

# Looking for that extra something?

Among the large number of offers in Lindau and the surrounding area, there are some that are truly spectacular. We would like to present some of them to you here. Unforgettable moments are guaranteed!



Sometimes it just has to be something special: because there is something to celebrate (we're thinking of marriage proposals or wedding anniversaries), because you want to prepare a real surprise (e.g. for someone who doesn't want anything or already has everything) or you want to treat yourself to something extraordinary (to practice some self-love). Below is a small and of course incomplete selection of special locations and events.

## SPEND THE NIGHT IN AN EXCLUSIVE AMBIENCE

Dining with a view of the lion and lighthouse, being awakened by the scent of fresh croissants: this is possible on the motor yacht 'Lady Octopus', which is docked in Lindau harbour. With three bedrooms and two bathrooms, the 18-metre-long luxury boat offers space for up to six people and is bookable all year round. Of course, you can also go out on the lake, whether with or without a skipper is up to you. In addition, you can of course, enjoy all the amenities of the **YachtHotel Helvetia** to which the boat belongs – including the use of the spa.

You need a little more space? Then take a closer look at **LOFT 1728**: the listed merchant's house on Lindau island was built in 1728 and, over three floors and 290 square meters, offers plenty of space in which to feel comfortable and relax. The open roof beams, visibly preserved walls and the modern furnishings lend the holiday apartment an utterly special charm.

The hotels Adara and VILLINO are small but beautiful establishments where you can spend the night in an exclusive atmosphere. The **boutique hotel Adara** (photo above) awaits you in the middle of Lindau island: the listed ensemble from the 13th century has been elaborately renovated and surprises with countless charming details. Every room here is really uniquely designed; the two top suites stretch over several floors and have a private roof terrace with private jacuzzi and view over the rooftops of the winding old town. The establishment also includes the KARRisma restaurant, where Julian Karr will be cooking for you – he has two toques and 15 Gault Millau points.

On the mainland, amidst old apple orchards, the Relais & Châteaux Hotel **VILLINO** attracts those seeking relaxation with its great sense of style and elegance. The establishment belongs to the FEINE PRIVATHOTELS collection and delights with its individualism, its warm family hospitality and eye for detail. Here too, you can enjoy award-winning food: In 2017, Toni Neumann, the long-time sous chef and now head chef earned his first star in the Michelin Guide for VILLINO; a star that the restaurant has held since 1998 with its 'Cucina dei Sensi'.



A night on the floating Hotel Suite of the YachtHotel Helvetia will be spent in a luxurious ambience.

#### INDULGENCE AT EXTRAORDINARY LOCATIONS

Speaking of food: you're looking for something different than the traditional breakfast buffet? No problem in Lindau – or rather, on Lake Constance. The crew of the **MotorYacht STRANDHOUSE** steers you over the water for three hours and in the meantime serves you a top-class breakfast (from the beginning of March to the end of November). Enjoy the privilege of being the only guests of the yacht – in summer, of course including a stop for a swim at a mooring spot of your choice. If you are more of an evening connoisseur, the sunset cruises offer a multi-course menu and wine accompaniment.

For BBQ fans the STRANDHAUS has culinary courses on the menu: in his **BARBECUE ACADEMY** Klaus Winter shows both private individuals and professional cooks how to prepare refined multi-course grilled and BBQ menus. A great gift idea for all who like to stand at the grill or smoker!

You can also expect a special culinary treat in the restaurant **Valentin Fine Dining**, where you can enjoy a delicious meal in a romantic atmosphere under an old walnut tree in the summer. The restaurant serves modern dishes made from selected ingredients.

#### FLOATING IN HIGHER SPHERES

They are 75 feet-long, filled with helium and are also popularly known as 'flying cigars': we're talking about the two **Zeppelins**, that glide majestically through the sky from mid-March until mid-November every year. The airships travel at an altitude of 300 meters – and you can be a passenger! There is a total of 15 different tours that take between 30 minutes and two hours. If you prefer to keep your feet firmly on the ground, then you can learn all about the history and present of these giants of the skies during a tour of a Zeppelin shipyard.

Things are also spectacular on the world's largest floating stage in Bregenz: every summer, an opera is performed here in the open air (photo on the right). The fantastic scenery and the unique nocturnal ambience in front of the backdrop of the lake make a visit to the **Bregenz Festival** an unforgettable experience. In 2020, 'Rigoletto' will be shown, and for the season 2021/22 'Madama Butterfly' is on the program. Our tip: combine a visit with a boat trip from Lindau! Mini cruises with multi-course meals as well as transfer shuttles are offered.

Speaking of ships: a trip with the Art Deco ship '**Motorschiff Oesterreich**' or the only paddle steamer on Lake Constance, the '**Hohentwiel**', are wonderful experiences. Both ships will be offering a large number of different trips between April and October – many of them starting and ending in Lindau harbour. Whether with a Captain's Dinner, Sundowner, Dixie Tour or Bohemian Evening: a trip on one of the lovingly restored ships will certainly make for an unforgettable Lake Constance experience.



# Creative individuality

What is special about Lindau and its small streets are not only the historic houses, but also the many creative individuals and artists who live and work here.



**I**f you are looking for non-mainstream shops and products, then you will find something here in Lindau at almost every corner. In addition, although much of the town's architecture is medieval, Lindau is keeping up with the times in one important aspect: many retailers attach great importance to the sustainable and responsible production of their product range. We here present a small selection of shops, each with their own very personal and individual characters.

#### **TAKE A PIECE OF YOUR LINDAU WITH YOU** **Fotogalerie Jörn Lorenz**

Lindau photographer Jörn Lorenz presents his works at his studio between Peterskirche and Diebsturm. The large-format images exude peace and harmony and are in this way a beautiful memory of atmospheric moments at Lake Constance.

#### **Altemöller'sche Buchhandlung**

The story of dear Augustin, books about Lake Constance, art prints with regional motifs: all this and more can be found in the bookshops of Eva Altemöller. A total of four shops on the island invite you to rummage around; moreover, the Augustin book café is a great place for sitting and browsing.

#### **HANDMADE WITH LOVE**

##### **Buchbinderei Heinemann**

In Fischergasse 17, Claudia Grosse pursues traditional handicraft: she processes paper, parchment or leather into premium products. A notebook with a cover made out of driftwood or a personalised calendar – unique items await your discovery!

##### **Goldschmiede in der Salzgasse**

If you're looking for an exclusive memento of your stay then this is the right place: using elaborate handcraft, goldsmith Manfred Höferlin manufactures 'Lindau landmarks'. The Lindau rings, chain pendants or belt buckles from Salzgasse 5 show famous Lindau buildings or the old city seal.

##### **Hauptsache Seeberger**

The sun is burning, the wind is rushing? Then why not pay a visit to Kathrin Seeberger – her products are warm, elegant and fitted to your head. A look into the workshop at Ludwigstraße 6 will reveal a professional at work making hats and caps!

##### **Die Handlung**

A happy, colourful hodgepodge of beautiful things are awaiting discovery in Fischergasse 4, where several creative locals present their goods. Whether made of wood or fabric, paper or porcelain: what you will see here is guaranteed to be handmade with love.

# WITH SMALL STEPS TOWARDS BIG GOALS

Even or especially when traveling, resource-saving principles can be implemented without having to give up what you cherish: relaxation through deceleration, a close look at details or new paths that lead to interesting encounters. Are you onboard?

**T**he Lake Constance region fascinates with its natural beauty and the untouched nature that can be encountered in many places. But although the conditions are excellent – the great climate at Lake Constance cannot be taken for granted. The world, which still seems to be in order, is changing; and the contributions of each and every one of us count in shaping this. We therefore invite you to take time on your vacation. Discover the lake and the surrounding area at your own pace. Enjoy regional products, the clear air and the alpine panorama. And at the same time contribute something to help preserve all that. Because a climate-friendly lifestyle is not just a phrase, environmentally friendly behaviour is more than just a fashion trend. It is an attitude to life that achieves a lot with a little effort and it suits everyone. We enjoy that which does us good – and we preserve it for all who want to experience it after us.

## SUSTAINABLE TRAVEL GUIDE

Under the motto 'Travel environmentally friendly, eat regionally, enjoy sustainably', our self-authored travel guide lists a lot of handy information. The 250-page booklet presents not just Lindau and the highlights of the Lake Constance region, but also gives tips on environmentally friendly excursions, regional specialties and sustainable shopping.

[www.lindau.de/lindauer-reisefuehrer](http://www.lindau.de/lindauer-reisefuehrer) (in German only)

## LINDAU GLASS SOULBOTTLE

The tap water in our region is of first-class quality: almost the entire urban area is supplied with water from the depths of Lake Constance. For refreshment on the go, try the Lindau 'soulbottle' – the glass bottle is not only pretty but also environmentally friendly and sustainable. You can buy the soulbottle directly in the Tourist Information or order it online. Some shops and cafes in Lindau, recognisable through stickers for the 'Refill Deutschland' or 'WaterforZero' initiatives on the door, offer free tap water to go.

[www.lindau.de/lindauer-soulbottle](http://www.lindau.de/lindauer-soulbottle)

## REUSABLE INSTEAD OF DISPOSABLE CUPS

If you drink your coffee or tea on the go, ask for the RECUP cup. For a € 1 deposit you get a plastic cup that you can return again at other participating partners. Or you can keep the cup as a souvenir of Lake Constance and use it also at home.

[www.recup.de](http://www.recup.de)



## SAVOUR THE TASTE OF THE REGION

At Lake Constance, nature pulls out all the stops – so much beauty can not only be seen, but also tasted! So, don't miss out on buying local specialties in one of the many farm shops: organic vegetables, freshly picked apples, local wines, exclusive fruit brandies, delicious jams and honey ... the culinary list could go on and on. And because, as you know, appetite and hunger don't respect opening hours, there are also vending machines on some farms which are accessible around the clock.

You can find all addresses in the A-Z area on page 96 – 98



# ONE LAKE – A LOT TO SEE

Lindau is the perfect starting point for short trips in the four-country region.



**M**any exciting destinations can be reached quickly and easily from Lindau. Whether it's fascinating natural highlights, historical buildings or modern museums – the region is perfect for a diverse holiday. Many of the popular destinations are best reached by bike, train or boat. In numerous places, you can also save money using the Bodensee Card PLUS.

## LINDAU DISTRICT & ALLGÄU

### ORCHARD WALKING TRAILS

These trails will bring you close to nature: a hike over centuries-old orchards can be enjoyed with all the senses. Listen to the twittering of birds, depending on the season enjoy either fruit blossoms or the ripe fruits, and feel the sun and wind on your skin. Orchards can be recognised by their 'scattered', tall and large-crowned fruit trees. Most of the varieties grown are robust fruit and nut varieties that have proven themselves in the local environment and which are less prone to diseases and pests. The orchards often serve as cattle and bee pastures. There are seven different routes to discover near Lindau.

### WEST ALLGÄU WATER TRAILS & SKY WALK ALLGÄU

Water fascinates young and old in all its forms – the whole variety of this vital substance can be discovered on the West Allgäu water trails. Thirty-one hiking trails lead to idyllic ponds and enchanted moors, rushing streams and raging waterfalls. Along the way you will discover historic mills and sawmills as well as a lot of fascinating information about the respective stations and the environment. The waterfall in Scheidegg is also worth seeing: here the Rickenbach crashes over two massive rock steps from heights of 22 and 18 meters into the valley. The treetop path 'Sky Walk Allgäu' opens up a fantastic view of the foothills of the Alps. The 500-metre path goes over suspension bridges and viewing platforms between the trees in the forest. A barefoot path, a skills course and two nature discovery trails also invite you to explore the forest. **Free entrance with the Bodensee Card PLUS Summer & Winter**

Detailed information on all tips as well as additional recommendations can be found at [www.lindau.de](http://www.lindau.de).

## BADEN-WÜRTTEMBERG

### DORNIER & ZEPPELIN MUSEUMS IN FRIEDRICHSHAFEN

Friedrichshafen's most famous museums promise a pioneering spirit that you can really reach out and touch: The Zeppelin Museum presents faithful reconstructions of parts of the 'Hindenburg' and shares interesting facts about the airships. The Dornier Museum also displays a lot of interesting facts about aerospace history – and brings the dream of flying that little bit closer. **Free entrance in both museums with the Bodensee Card PLUS Summer & Winter**

### MAINAU ISLAND & CONSTANCE

The approximately one-kilometre-long Mainau island is owned by the Bernadotte noble family who have their roots in Sweden. It represents a Mediterranean oasis in the lake. In spring, the orchid show in the palm house with over 3,000 plants is an unforgettable sight; just as thrilling is the sea of tulips with almost 400 different varieties. In summer, the flowers in the Italian rose garden show themselves in all their splendour, and from the end of August around 12,000 dahlias create a firework of colours and shapes. The 'flower island', which belongs to the city of Constance, is open 365 days a year from dawn to dusk. Once you are in the 'Council City', then you have to go on a city tour on which you can discover, among other attractions, the cathedral and the historic old town. The state archaeological museum and SeaLife Konstanz also invite you to visit.

### AFFENBERG SALEM & SALEM MONASTERY

A visit to the Affenberg (ape mountain) in Salem is not only great fun for the little ones: around 200 Barbary apes live in the 20 acres of forest, you can watch them while walking through the grounds and feed them with popcorn. Whether they are sitting on a railing and gazing curiously at visitors, sliding through the trees or romping around on piggyback – watching the primates from Morocco and Algeria is both entertaining and educational. **Free entrance with the Bodensee Card PLUS Summer**

Practically on the way, in the midst of generous parks and gardens, lies a former Cistercian monastery, today known as Salem Monastery and Palace. Its roots are in the Middle Ages: In 1134, the settlement of Salmannsweiler was endowed to the Order of Cistercians for the purpose of building a monastery. The abbey quickly became one of the most important in southern Germany. **Free entrance with the Bodensee Card PLUS Summer & Winter**

### ADDITIONAL HIGHLIGHTS IN BADEN-WÜRTTEMBERG:

'Ravensburger Spielaland' theme park close to Ravensburg, the pile dwellings of Unteruhldingen, the old castle and new palace in Meersburg, the Birnau basilica



## AUSTRIA

### BREGENZ AND THE PFÄNDER

Vorarlberg's capital Bregenz offers much more than just the largest floating stage in the world – for example, its Upper Town which dates from the 13th century. The imposing Martinsturm from 1599, the castle Deuringschlösschen, the Capuchin Monastery and the St. Gallus parish church are also worth seeing. In the Lower Town you can admire contemporary works in the Kunsthaus (KUB) or gain insights into the history of Vorarlberg in the Landesmuseum. The performances in the Theater am Kornplatz always receive a large amount of attention and the building is also architecturally interesting.

The easiest and fastest way to get to Bregenz is by train or bike, ships also sail to the harbour at the foot of the Pfänder. The local mountain offers a spectacular view over Lake Constance and the Alpine peaks of Austria, Germany and Switzerland. The athletically inclined can tackle the climb on foot or by bike. If you like something more comfortable, go up in one of the large cars of the Pfänderbahn, whose base station is located within walking distance of Bregenz harbour. Up at the 1,064 metres-high peak families can expect a large playground as well as a panoramic map with interactive elements. The alpine wildlife park is home to dwarf goats, ibexes and mouflons, among others. In winter, there are maintained trails for skiers and snowboarders and a toboggan run. **Free ascent and descent with the cable car with the Bodensee Card PLUS Summer & Winter**

### ADDITIONAL HIGHLIGHTS IN AUSTRIA:

A hike or a drive on the 'Karren' mountain in Dornbirn, a hike through the Rappenloch chine close to Dornbirn, interactive 'Inatura' family museum in Dornbirn

## SWITZERLAND

### SÄNTIS

In clear weather you can spy its peak from Lindau: Säntis in eastern Switzerland is a truly impressive mountain, and with 2,502 metres the highest peak of the Lake Constance region. Get up there either using one of the different trails or with the suspension railway: only ten minutes are enough to reach the summit. Do not forget your camera for the view over as many as six different countries. Germany, Austria, Italy, France, Liechtenstein and of course, Switzerland can be seen from here. Depending on the season, Säntis concerts, sunrise rides or other events are offered. Nordic walking routes around the mountain and the Schwägalp pass offer an opportunity for athletic activity. A visit to the Alpschau dairy is also recommended: from May to November fresh Alpine milk products are available for purchase. **Free ascent and descent with the suspension railway with the Bodensee Card PLUS Summer & Winter**

### ADDITIONAL HIGHLIGHTS IN SWITZERLAND:

St. Gallen Stiftsbezirk (UNESCO World Heritage Site) with the abbey library of Saint Gall, the Rhine Falls close to Schaffhausen (Europe's largest waterfall)

## LEON JOST (12)

**Second in the German Optimist sailing ranking in 2019, participant in the Optimist World Championships in Cyprus (2018) and Antigua (2019)**

I sail around 20 regattas a year in Germany and many other European countries. In between, I like to spend time sailing and swimming in my hometown Lindau. My new hobby is stand-up paddling – you don't need wind, it's easy to learn and fun. I'm also a member of Lindau's ski club – in the winter, we often go to Oberstaufen, which is only 40 minutes from here. I also love jogging around the 'small lake' in Lindau: past the Inselhalle over the railway embankment to the rowing club and mini golf course and back onto the island over the bridge. The route is also great for a walk!



## EXPERIENCE MUCH, PAY LITTLE – WITH THE BODENSEE CARD PLUS

The Bodensee Card PLUS is the 'adventure card' for the Lake Constance four-country region, with which you can enjoy numerous advantages.

During the summer season (4 April 2020 – 31 December 2020), you can enjoy free admission to over 160 attractions around Lake Constance, free travel on passenger boats, exclusive experiences and express check-in at many destinations. The Bodensee Card PLUS is available for three or seven days and is valid for six months. So, you can plan your 'adventure days' flexibly and with interruptions. The six months start as soon as the card is scanned for the first time at the cash register of a participating attraction.

In the winter (21 October, 2019 to 3 April, 2020), you will receive free admission to over 60 winter attractions. On three days of your choosing within the season you can experience unforgettable mountain railway rides, relax in baths and spas or discover museums (for example, a Monday in October, a Wednesday in January, a Sunday in March). In addition, card holders receive discounts on the Friedrichshafen – Romanshorn ferry, the catamaran as well as during the advent cruises of the Bodensee-Schiffsbetriebe.

BODENSEE CARD PLUS SUMMER	For 3 days incl. boat trip on 2 days	For 7 days incl. boat trip on 4 days
	<b>Adults</b> (from 17 years)	€ 69
<b>Children</b> (from 7 years)	€ 41	€ 65

BODENSEE CARD PLUS WINTER	For 3 days
	<b>Adults</b> (from 16 years)
<b>Children</b> (from 6 years)	€ 19

# Making connections through common experiences

A hike from the Pfänder in Austria over the Fluh to Gebhardsberg is a wonderful tour and is also ideally suited to families with children.



There is so much to discover in the Lake Constance four-country region – we can guarantee that you won't get bored.



A hike is a blessing for the soul – no matter at what age. That's why we are here introducing a route for young and old alike, and one that is especially suitable for families. It leads to the Pfänder – the local mountain of Bregenz and Lindau – and then continues on to the Fluh and the Gebhardsberg before ending at the 'Möth' wine tavern.

Let's start with a very special kind of ascent: in just six minutes the cable car will bring you and your family to an altitude of 1,064 metres on the Pfänder. You would prefer to do it under your own steam? No problem! The ascent takes around 1.5 hours and will lead you both through wide, easily walkable paths as well as along narrow mountain trails and over a few steps. You can again and again enjoy great views of the deep blue Lake Constance – and by the way, there is a lot to discover: centuries-old trees whose branched roots offer excellent places for picnics. Delightful wooden bridges over small streams. Meadows and glades, where fox and hare bid each other good night. And above, upon arriving at the Pfänder's summit: dwarf goats, mouflons and pot-bellied pigs in the alpine wildlife park. Depending on the season, you can stop off along the way at the 'Halbstation' inn on the the 'Pfänderdohle' as well as 'Berghaus Pfänder', which offers one of the most beautiful panoramic views in Vorarlberg. From there it's either down again into the valley or over the 'Fluh' and then onto 'Gebhardsberg'.

We would recommend the latter option, because the way is easier and you can encounter the 'Fluh' district with its beautiful church. Also here, you can again and again enjoy lake views. Children can also play at being knights and princesses: the Gebhardsberg is the site of the ruins of the Hohenbregenz castle. The rock wall under the Gebhardsberg has been developed into a climbing garden. So, don't be surprised if you suddenly see people hanging over you in the ropes. The children will love it! What they will also love is the nature trail, which begins below the castle ruins. Different stations give insights into biology, geology and the history of the Gebhardsberg. Then you hike over the so-called 'Känzele' down the valley to your last, but perhaps most enjoyable station in the open air – to the 'Heurigen Möth' wine tavern on Langener Straße, where wine and snacks are served. There is a hanging swing and sandbox for the children and for the adults a good, self-produced Riesling – and all can enjoy the delicious specialities on the farmer's platter.



**Information on family holidays**  
Water lover or country bumpkin? Rain or shine? This booklet lists all important information for a thoroughly successful family holiday at Lake Constance. Download & order of free copies: [www.lindau.de/downloads](http://www.lindau.de/downloads)



## ACCOMMODATION

Find out about our comprehensive range of hotels, guest houses, boarding houses, apartments and private rooms, and book your next holiday in Lindau!

### PICTOGRAMS

Here you can find explanations of the pictograms on the following pages.



**Book your accommodation online directly at [www.lindau.de](http://www.lindau.de) without having to consult your host first.**

	Living room/bedroom		TV room
	Separate living room/bedroom		Conference/seminar room
	Additional bedroom		Credit cards accepted
	Bed linen and towels		No pets allowed
	Balcony		Pets by arrangement
	Separate patio		Smokers' rooms available
	Joint patio		Non-smokers
	Lake view		Air conditioning
	Breakfast possible/ breakfast buffet		Family rooms
	Bread roll service		Child-friendly (min. high chair, cot)
	Sunbathing lawn/garden		Children's playground
	Barbecue area		Suitable for disabled guests
	Garage/underground parking		Disabled access acc. to DIN
	Parking space at the premises		standard
	No parking at the premises		Suitable for allergy sufferers
	Space for bikes		Swimming pool
	Bikes for hire		Indoor swimming pool
	Lift		Sauna
	Restaurant		Fitness room
	Room w. bath or shower/WC		Solarium
	Room with shared bath/shower		Massage/cosmetic applications
	Extra beds		Dishwasher
	TV		Washing machine/laundry service
	Bar		Farm with animals
	Drinks on the premises		Fruit farm with no animals
	Minibar in all rooms		English
	Telephone		French
	Internet		Italian
	Wi-Fi		Spanish
	Room safe		
	Lounge		

## CLASSIFICATION

### Meaning of the stars for holiday homes and private accommodation

#### H/P \*

Overall adequately equipped with simple comfort. The required basic facilities are present and in a suitable condition for use. Wear and tear due to age is permissible; accommodation is generally reasonably comfortable.

#### H/P \*\*

Functional and good overall facilities with moderate comfort. The facilities must be in a good state of repair, and be of a good quality. Functionality is important, and the facilities must give the overall impression of being well maintained.

#### H/P \*\*\*

Good, homely facilities with a good level of comfort. Facilities of better quality. Visually appealing overall impression, with worth placed on decoration and homeliness.

#### H/P \*\*\*\*

Top quality facilities with a high degree of comfort. Facilities of high and well-maintained quality. Overall, the designs and materials must give the impression of being well-matched. Location and infrastructure of the building are of a high standard.

#### H/P \*\*\*\*\*

First-class overall facilities with additional services. Very well-maintained and exclusive overall impression. High level of technical comfort and an excellent infrastructure. Very well preserved and maintained.

### Meaning of the stars for hotels, bed and breakfast establishments and guest houses

#### ★ Tourist:

Accommodation suitable for low expectations

#### ★★ Standard:

Accommodation suitable for moderate expectations

#### ★★★ Comfort:

Accommodation suitable for discerning expectations

#### ★★★★ First Class:

Accommodation suitable for very discerning expectations

#### ★★★★★ Luxury:

Accommodation suitable for the most discerning expectations

"S" The suffix "Superior" is for establishments that significantly exceed the required criteria for their category.

### General information

The establishments listed in this accommodation directory are only a selection. The establishments are not ranked by quality. No liability can be assumed by the publisher of this guide, Lindau Tourismus und Kongress GmbH, for any damages resulting from incorrect information provided by the respective establishments or for services not rendered by them.

All accommodation marked with stars has received official classification: for hotels, bed and breakfasts and guest houses, from the German Hotel and Restaurant Association; for private accommodation and holiday homes, from the German Tourist Board by appointment from Lindau Tourismus und Kongress GmbH. Participation in this classification is voluntary.

Accommodation not marked with stars has not been officially reviewed. This does not imply any assessment of their quality.



## Hotel Bayerischer Hof ★★★★★ Hotel Reutemann / Seergarten ★★★★★

### PLAN D14

Train 0.1 | Bus 0.1 | Lake 0.0 km

Bayerischer Hof Stolze-Spaeth KG  
Bahnhofplatz 2 (Harbour promenade)  
88131 Lindau  
Tel +49 8382 9150  
Fax +49 8382 915591  
hotel@bayerischerhof-lindau.de  
hotel@reutemann-lindau.de  
www.bayerischerhof-lindau.de  
www.reutemann-lindau.de

Number of beds 318  
14 SR € 105–272 | 147 DR € 75–194 pp  
4 Suites € 578–811 p. Suite  
Half-board 3 course menu € 38 pp  
Half-board 4 course menu € 48 pp  
Parking € 15 p. day/vehicle  
Underground Parking € 18 p. day/vehicle  
Open January – December



## Hotel "Am Rehberg" garni ★★★★★

### PLAN E/F9

Train 1.5 | Bus 0.1 | Lake 0.5 km

Our romantic, family run hotel with a mediterranean flair is located directly in front of the island of Lindau and surrounded by a beautiful green scenery. Almost all of our comfortable rooms furnished with attention to detail and our individually designed suites offer you a lovely view of the mountains. Our large flower garden with sunbathing area and pavilions invites you to unwind and relax. You can find an oasis of calm and tranquility here.

Indoor pool 28 °C, Finnish sauna, infra-red cabin, library, reading and games room, billiards, Wifi, numerous parking spaces next to the house as well as bicycle stands (free of charge). Bicycles and garages available for rent.

Interesting hiking trails start within walking distance of our hotel. Along meadows and orchards, towards the rolling country, you can enjoy the view of the lake and the magnificent mountains. The local bus stop is situated about 100 m away from the house.

Hotel Am Rehberg  
Familie Bast KG  
Am Rehberg 29 | 88131 Lindau  
Tel + 49 8382 3329  
Fax + 49 8382 3576  
info@lindauhoteles.de  
www.lindauhoteles.de

Number of beds 38  
3 DR € 46–66 pp  
2 Shared rooms € 41–52 pp  
4 Junior Suites € 59–74 pp  
10 Suites € 65–82 pp  
DR as SR on request  
Open March – October





## Hotel Alte Schule

### PLAN E12

Train 0.5 | Bus 0.1 | Lake 0.1 km

After extensive, lovingly restoration, our hotel "Alte Schule" (Old School) on the island of Lindau has been re-opened in April 2016 as an owner-managed hotel garni. Discover our exceptional theme rooms, inspired by the three jewels of our region: colorful and invigorating like the unique "Mainau" — an island full of flowers; cozy and quaint like a mountain lodge on the "Pfänder" — the mountain at our lake; and, last but not least, charming and relaxing like the "Bodensee" (Lake Constance). The treasures left over by exceptional builders of the past centuries can be found throughout the house. In addition to modern conveniences such as elevators, boxspring beds, air conditioning and Wifi, they create a delightful mixture of past and present. For a longer time-out, enjoy our package "7 for 6": If you book your room for one week or longer, the last night is free of charge!

The beautiful island of Lindau offers countless possibilities within walking distance of the hotel. If you'd like to explore Lake Constance by bicycle or just want to spend an active day outside, you can do this by using one of our bikes.

Whoever visited the lake will never forget its beauty. So come to our charming town and see for yourself what it has to offer. We look forward to welcoming you!

Hübler GmbH  
Alter Schulplatz 2 | 88131 Lindau  
Tel + 49 8382 9114444  
info@hotelalteschule-lindau.de  
www.hotelalteschule-lindau.de

Number of beds 25  
5 SR € 79–99 pp  
5 DR € 62.50–92.50 pp  
5 Comfort DR € 82.50–112.50 pp  
2 Suites € 92.50–127.50 pp  
Open January – December



## Hotel garni Reulein

### PLAN H8

Train 4.0 | Bus 0.0 | Lake 2.0 km

Lindau's hotel with an impressive view of mountains and lake. Regardless of whether you want to discover the historic island town of Lindau, whether you are on a business trip or just passing through — we are the feel-good hotel and therefore always the right location.

Our spaciouly designed rooms, elegant furniture made of solid wood as well as high-quality 32" flat screen TVs will make your stay highly comfortable. Complimentary Wifi in your room will help you stay up-to-date. All our rooms are facing south, away from the street.

Enjoy the breathtaking view on Lake Constance, the "Pfänder" mountain and the Swiss Alps from your balcony or rest on your terrace with garden access. The attic houses our avant-garde rooms with open-roof construction.

An extensive breakfast buffet with a view of the nearby orchards will help you wake up in the morning. Our reception is open daily from 07:00 am to 10:00 pm. Check-In outside opening hours is possible.

Hotel garni Reulein  
Hotelbetriebsgesellschaft Reulein mbH  
Steigstraße 28 | 88131 Lindau  
Tel + 49 8382 96450  
Fax + 49 8382 75262  
hotel-reulein@t-online.de  
www.hotel-reulein.de

Number of beds 48  
8 SR € 79–99  
18 DR € 53–76.50 pp  
1 Suite (4 persons) € 30–42.50 pp  
Open January – December



## Hotel Lindauer Hof ★★★★★

### PLAN D13

Train 0.2 | Bus 0.0 | Lake 0.0 km



Hotel Lindauer Hof  
Lindauer Hof Betriebs-GmbH  
Dammgasse 2 | 88131 Lindau  
Tel +49 8382 4064  
Fax +49 8382 24203  
info@lindauerhof.de  
www.lindauerhof.de

Number of beds 66  
25 DR €99.50–122.50 pp  
DR as SR €148–169 pp  
5 Suites €134.50 pp  
Extra charge for half-board €29 pp  
Open January – December



This traditional, family run hotel is located directly at the popular harbour entrance. The hosts and their team ensure that you can enjoy all the amenities of a modern 4-star hotel. We offer exceptional deluxe rooms with digital TV and LCD TV, Wifi, laptop safe, minibar, electric blinds and air-conditioning in some rooms.

## Hotel vis à vis ★★★

### PLAN C14

Train 0.1 | Bus 0.1 | Lake 0.2 km



Hotel vis à vis  
Bahnhofplatz 4–6 | 88131 Lindau  
Tel +49 8382 3965  
Fax +49 8382 21321  
hotel@visavis-lindau.de  
www.visavis-lindau.de

Number of beds 120  
24 SR €87–125  
36 DR €49.50–87.50 pp  
11 Shared rooms €49–72.50 pp  
Extra charge for half-board €24 pp  
Open January – December



A very warm welcome to Hotel vis à vis in Lindau. Look forward to relaxing days in our Hotel vis à vis in Lindau. The central location is ideal for your excursions by boat, train, bus or bicycle. Countless cafés invite you to stroll and shop. There are plenty of possibilities for an interesting day. Relax in our sauna and fitness area. You can relive the day again in your mind with a leisurely cocktail or a freshly tapped beer at our bar. The lovingly furnished modern rooms with 3-star comfort are equipped with TV, telephone, free internet access, safe, radio, bathroom with WC, shower or bathtub. Hotel parking spaces and a bicycle garage.

## Hotel garni Brugger

### PLAN F12

Train 0.8 | Bus 0.1 | Lake 0.1 km



Hotel garni Brugger  
Bei der Heidenmauer 11 | 88313 Lindau  
Tel +49 8382 93410  
Fax +49 8382 934168  
info@hotel-garni-brugger.de  
www.hotel-garni-brugger.de

Number of beds 45  
4 SR €60–88  
14 DR €47–65 pp  
2 3-bed-rooms €42–48 pp  
2 4-bed-rooms €34–41.25 pp  
Parking €9 p. day  
Dogs on request €9 p. day (without food)  
Open January – December



Our well-kept hotel garni Brugger with its familiar atmosphere is situated across from the municipal park. Due to its central location, several points of interest such as the congress centre "Inselhalle," harbour, market square, casino and the Old Townhall can be reached within a few minutes. Lake Constance is only a few steps away. Start your day at our extensive breakfast buffet, later you can enjoy our Finnish sauna, the steam bath and the infra-red cabin (open September to April).

## Hotel & Pension Seereich

### PLAN F10

Train 1.0 | Bus 0.1 | Lake 0.1 km



Hotel & Pension Seereich  
Bregenzerstraße 16/18 | 88131 Lindau  
Tel +49 8382 3736  
Fax +49 8382 26213  
info@seereich.de  
www.seereich.de

Number of beds 65  
1 SR €69–89 | 29 DR €45–79 pp  
1 Shared room €30–40 pp  
1 Suite €49–79 pp  
1 wheelchair accessible DR €49–79 pp  
Parking €8 p. day/Vehicle  
Open January – December



SEEREICH – your personal kingdom for a while! Our new house is situated in a quiet and direct location just off the island. An enchanting backdrop with the mountains and lake accompanies you on the short distance to the old town. The lovingly furnished rooms captivate with their individual charm. Hospitality is embodied by words, gestures and attention. Dedicated employees characterise this modern hotel. The fair prices include the breakfast buffet and Wi-Fi. Inexpensive parking spaces are available right next to the hotel. We promise you a truly special living experience – away from the hustle and bustle, yet close to the lake. Your Hotel Pension SEEREICH team.

## Landhotel Martinsmühle ★★★

**PLAN A2**

Train 7.0 | Bus 1.3 | Lake 4.0 km

Landhotel Martinsmühle  
Bechtersweiler 25 | 88131 Lindau  
Tel +49 8382 5849  
relax@landhotel-martinsmuehle.de  
www.landhotel-martinsmuehle.de

Number of beds 60  
1 SR € 50-60  
16 DR € 42.50-60 pp  
7 Shared rooms € 38-45 pp  
1 Family apartment € 155-185 p. App.  
3 Stadel-Appartements € 60-70 pp  
Open March - October

Our family-run country hotel is situated in a quiet location, picturesquely hidden between the Mühlbach stream, meadows and fruit trees. The rooms are furnished in country house style. Many of them feature a balcony and painted farmhouse furniture. We have a cosy snack bar, an idyllic sunny terrace and, in bad weather, a romantic open fire. A well-stocked library also invites you to browse the shelves. Homemade jams, apple juice and schnapps.



## Hotel-Gasthof Adler

**PLAN E3**

Train 4.5 | Bus 0.1 | Lake 4.3 km

Hotel-Gasthof Adler  
Bodenseestraße 16  
88131 Lindau  
Tel +49 8382 5268  
gasthof@adler-lindau.de  
www.adler-lindau.de

Number of beds 42  
4 SR € 65-79 | 13 DR € 45-60 pp  
3 Shared rooms € 40-55 pp  
2 Suites Chalet € 55-70 pp  
Extra charge for half-board € 24.90 pp  
Open 01 February - 20 December

A very warm welcome to Land-Hotel Adler. Enjoy the loveliest days of the year in our newly renovated guest rooms. We offer you homestyle, regional and seasonal cuisine with fresh fish specialties from Lake Constance. You will find us in the holiday village of Oberreitnau - one of Swabia's most beautiful villages (winner of numerous awards) and just 5 km away from the island of Lindau and Lake Constance. Current prices and other great offers can be found on our website.



## Hotel Restaurant Schachener Hof

**PLAN C8**

Train 3.0 | Bus 0.1 | Lake 0.5 km

Hotel Restaurant Schachener Hof  
Schachener Straße 76 | 88131 Lindau  
Tel +49 8382 3116  
Fax +49 8382 5495  
info@schachenerhof-lindau.de  
www.schachenerhof-lindau.de

Number of beds 18  
9 DR € 44-66 pp  
DR as SR € 60-79 pp  
Half-board € 28 pp  
Open February - January

Small family hotel in a quiet area. Ideal starting point for cyclists and hikers. Healthy breakfast with homemade jam. Excellent kitchen.

Welcome to the restaurant where you feel happy to be alive!



## Ebner Boutique-Hotel &amp; Konditorei ★★★



Friedrichshafener Straße 19  
88131 Lindau  
Tel + 49 8382 93070  
info@ebner-lindau.de  
www.ebner-lindau.de

Number of beds 34 + 10  
4 SR € 59-99 | 12 DR € 44-85 pp  
2 Shared rooms € 39-65 pp  
3 Suites € 49-95 pp  
Open January - December

**PLAN E9**

Train 2.0 | Bus 0.0 | Lake 0.8 km



## Hotel Schöngarten garni ★★★



Schöngartenstraße 15  
88131 Lindau  
Tel +49 8382 93400  
info@hotel-schoengarten.de  
www.hotel-schoengarten.de

Number of beds 27  
3 SR € 79-90  
9 DR € 49-85 pp  
3 Shared rooms € 45-65 pp  
Open February - December

**PLAN E8**

Train 3.0 | Bus 0.2 | Lake 2.0 km



## Hotel Bad Schachen

**PLAN C9**

Train 4.5 | Bus 0.5 | Lake 0.0 km

Hotel Bad Schachen  
Schielin GmbH & Co. KG  
Bad Schachen 1 | 88131 Lindau  
Tel Hotel +49 8382 298-0  
Tel Spa +49 8382 298-500  
servus@badschachen.de  
www.badschachen.de

Number of beds 209  
47 SR € 132-189\* | 75 DR € 104-181\* pp  
6 Suites € 193-425\* pp  
\*Prices subject to change  
Open April - October

The Hotel "Bad Schachen" on the mainland of Lindau offers a magnificent view over Lake Constance and the nearby Alps. The historic hotel is located in a park area with beautiful old trees. Additionally, the wellness oasis "Schachen Bad & SPA" with its exclusive SPA, the modern indoor pool, the sauna and the fitness area make the place a real holiday paradise. A real gem of traditional bath architecture can be found in the "Lindenhof" park nearby.



## Best Western Plus Marina Star Hotel

**PLAN I10**

Train 3.0 | Bus 0.2 | Lake 0.4 km

Marina Star Hotel GmbH  
Josephine-Hirner-Str. 4 | 88131 Lindau  
Tel +49 8382 976600  
info@marina-starhotel.bestwestern.de  
www.marina-starhotel.bestwestern.de

Number of beds 198 | 99 DR  
DR as SR € 89-199  
DR € 99-209\*  
9 wheelchair accessible rooms € 89-209\*  
6 rooms for allergy sufferers € 89-209\*  
\*Price per room  
Open January - December

Ideal transport connections to the Autobahn A96, only 28 km to exhibition grounds and airport Friedrichshafen. Free Wifi and free parking spaces next to the hotel. 5 high-standard, air-conditioned meeting rooms. In close proximity to many attractions around Lake Constance.



## Hotel Schönau ★★★

**PLAN D6**

Train 5.0 | Bus 0.2 | Lake 5.0 km

Kellereiweg 36  
88131 Lindau  
Tel +49 8382 9110485  
info@hotel-schoenau-bodensee.de  
www.hotel-schoenau-bodensee.de

Number of beds 36  
16 DR € 50 pp | 1 Suite € 55 pp  
1 handicapped accessible DR € 50 pp  
SR on request € 65 pp  
Open January - December



## Boutique | Hotel | Restaurant Adara

**PLAN E12**

Train 0.5 | Bus 0.2 | Lake 0.2 km

Adara GmbH | Alter Schulplatz 1  
88131 Lindau  
Tel +49 8382 943500  
info@adara-lindau.de  
www.adara-lindau.de

Number of beds 34  
4 SR € 110-210 | 7 DR € 70-135 pp  
5 Suites € 110-195 pp  
1 Maisonette Loft € 250-350 pp  
Open January - December



## Hotel Gasthof Inselgraben garni

**PLAN D13**

Train 0.2 | Bus 0.2 | Lake 0.2 km

Hintere Metzgergasse 4-8  
88131 Lindau  
Tel +49 8382 5481  
inselgraben@t-online.de  
www.inselgraben.de

Number of beds 29  
3 SR € 65-75 | 11 DR € 45-65 pp  
1 Family rooms (2 Ad.+ 2 Kids) € 150  
2 Shared rooms € 55 pp  
Open April - December



## Hotel Landgasthof Köchlin

**PLAN G8**

Train 2.5 | Bus 0.0 | Lake 1.2 km

Kemptener Straße 41 | 88131 Lindau  
Tel +49 8382 96600  
info@hotel-koechlin.de  
www.hotel-koechlin.de

Number of beds 40  
7 SR € 57-79  
7 DR € 51.50-64 pp  
5 Family rooms € 42-64 pp  
Half-board € 25 pp  
Open January - December



## Hotel Möve garni



Auf der Mauer 21 | 88131 Lindau  
Tel +49 8382 2758950  
info@hotel-moeve-lindau.de  
www.hotel-moeve-lindau.de

Number of beds 58  
2 SR € 57–67 | 21 DR € 45–56 pp  
2 2-bed-rooms € 48–51 pp  
1 3-bed-rooms € 43–50 pp  
1 Family room (3–4 Pers.) € 43–50 pp  
Open April – November

PLAN E12

Train 0.5 | Bus 0.0 | Lake 0.15 km



## Hotel Ratsstuben



Ratsstuben GbR | Familie Karl  
Ludwigstraße 7 | 88131 Lindau  
Tel +49 8382 6626  
kontakt@ratsstuben.info  
www.ratsstuben.li

Number of beds 28  
4 SR € 69–79  
10 DR € 62–77.50 pp  
2 Suites € 90–95 pp  
Open March – January

PLAN E13

Train 0.5 | Bus 0.2 | Lake 0.2 km



## Hotel Noris



Brettermarkt 13  
88131 Lindau  
Tel +49 8382 3645  
Fax +49 8382 1042  
info@hotel-noris.de  
www.hotel-noris.de

Number of beds 21  
3 SR € 54–59  
9 DR € 50–59 pp  
Open March – December

PLAN E13

Train 0.3 | Bus 0.1 | Lake 0.2 km



## Hotel | Restaurant VILLINO



Mittenbuch 6 | 88131 Lindau/Bodolz  
Tel +49 8382 93450  
Fax +49 8382 934512  
info@villino.de | www.villino.de

Number of beds 42  
15 DR € 95–125 pp  
6 Suites € 170–205 pp  
Relais & Châteaux  
FEINE PRIVATHOTELS  
Open January – December

PLAN C7

Train 3.0 | Bus 1.0 | Lake 2.0 km



## Jugendherberge Lindau



PLAN F9  
Train 2.0 | Bus 0.1 | Lake 0.7 km

Jugendherberge Lindau  
Herbergsweg 11 | 88131 Lindau  
Tel +49 8382 96710  
Fax +49 8382 9671050  
lindau@jugendherberge.de  
www.lindau.jugendherberge.de

Number of beds 244  
9 SR € 32.40–42.90  
22 DR € 29.90–39.40 pp  
40 Shared rooms € 27.90–34.90 pp  
Half-board € 6.70 pp  
Open January – December

Experience real community feeling in this modern youth hostel with its historic, listed estate. Large breakfast buffet with various organic products included.

Children under the age of 6 stay and eat for free. Special offers for families (surfing, skiing, New Year's Eve events).

Free Wifi, fountains with drinking water, meeting rooms for seminars and bands.



## das mietwerk – Bed &amp; Breakfast



PLAN E9  
Train 1.2 | Bus 0.1 | Lake 0.5 km

das mietwerk – Bed & Breakfast  
Holdereggstraße 11 | 88131 Lindau  
Tel +49 8382 5041130  
willkommen@dasmietwerk.de  
www.dasmietwerk.de

Number of beds 58  
1 SR € 44–59 | 8 DR € 36–63  
Family & shared rooms € 35–42 pp  
1 Appartement € 56–83 pp  
1 Holiday home € 129–192  
Prices incl. organic breakfast  
Open March – beginning of January

Spend the night in style. We would like to inspire you with our personal and sustainable BIO bed & breakfast concept. We welcome you just 500 m away from the lake with creatively and lovingly designed rooms, a holiday apartment with many lake and mountain views, and a magnificent garden.

NEW: Electric scooter and bike rentals! Welcome home!



## GUESTHOUSES | BOARDING HOUSES

## Gästehaus Breyer



Eichbühlweg 37 | 88131 Lindau  
Tel +49 8382 5840  
Fax +49 8382 28298  
info@gaestehaus-breyer.de  
www.gaestehaus-breyer.de

Number of beds 14  
1 SR € 42.50  
3 DR € 35–40 pp  
3 DR € 39–44 pp  
Open June–October

PLAN E7

Train 3.5 | Bus 0.1 | Lake 2.5 km



## Gasthof Zum Zecher



Bregenzer Straße 146 | 88131 Lindau  
Tel +49 8382 961330  
info@gasthof-zecher.de  
www.gasthof-zecher.de

Number of beds 30  
3 SR from € 56  
9 DR € 45 pp  
3 3-bed-rooms € 35 pp  
Half-board on request  
Open January – December

PLAN J12

Train 5.5 | Bus 0.3 | Lake 0.4 km



## Campingpark Gitzenweiler Hof ★★★★★



PLAN G4  
Train 6.0 | Bus 0.1 | Lake 5.0 km

Campingpark Gitzenweiler Hof GmbH  
Gitzenweiler 88 | 88131 Lindau  
Tel +49 8382 94940  
info@gitzenweiler-hof.de  
www.gitzenweiler-hof.de

722 pitches, 365 for tourists  
2 Adults € 32\* pn  
2 Ad. 2 Kids (3–9 J.) € 42\* pn  
\*Tourist tax not included  
Shop and further gastronomy  
open March 27th – November 8th, 2020

Experience camping with all your senses and yet in comfort. Whether you are interested in sports, close to nature or culture-loving campers: You can find a variety of ideas for the best time of the year in our annual program "GITZ-Hits" and on our homepage.

Camp grounds open all year  
Wirtshaus with lunch open all year



## Park-Camping Lindau am See



PLAN I12  
Train 5.0 | Bus 0.3 | Lake 0.0 km

Park-Camping Lindau am See  
Fraunhoferstraße 20 | 88131 Lindau  
Tel +49 8382 72236  
info@park-camping.de  
www.park-camping.de

270 pitches, 220 for tourists  
2 Adults in HS € 28.50\* pn  
2 Adults 2 Kids (3–14 Years)  
in HS € 38\* pn  
\*Tourist tax not included  
Open March 22nd – November 3rd, 2020  
Member of "Top-Camping Bayern"  
Eco-Camping

Carefree days right at the shore of Lake Constance: The appealing gastronomy, the convenient site equipment and the impressive backdrop of the lake will help you to relax and recover – within a short time, with your whole family.



# Hanssen Ferien- wohnung F\*\*\*\*\*

## PLAN H8

Train 2.5 | Bus 0.3 | Lake 1.5 km



Hanssen Ferienwohnung Lindau  
Margot Hanssen  
Bäuerlinshalde 4 | 88131 Lindau  
Tel +49 8382 78390  
Fax +49 8382 977271  
info@hanssen-ferienwohnung-lindau.de  
hanssen.rolf@t-online.de  
www.hanssen-ferienwohnung-lindau.de

1 flat (85 m<sup>2</sup>) | Beds per flat 2  
Daily rate without tourist tax € 130–145  
Open January – December  
Minimum stay 5 nights

Very spacious, newly furnished luxury apartment in a modern, well maintained 2-family house. Ideal for 2 people. An additional bed is possible on request. Located in a quiet environment in residential area with panorama view on the lake and mountains. You can see the entire upper Lake Constance towards Austria and Switzerland as well as the island of Lindau.  
High-standard comfort: living room (35 m<sup>2</sup>) with pull-out couch, separate kitchen area. Bedroom with double bed and additional bed, modern spacious bathroom with separate shower box, covered south terrace, well-kept garden, spacious carport for 1 to 2 cars as well as separate bicycle stands.  
For more details see: <https://www.traum-ferienwohnungen.de/22945/>.



# Ferienwohnungen Reutin



**PLAN H8**  
Train 3.8 | Bus 0.1 | Lake 2.0 km

Martin Reutin  
Oberreutiner Weg 10 b  
88131 Lindau  
Tel +49 8382 74874  
info@ferienwohnungen-reutin.de  
www.ferienwohnungen-reutin.de

3 flats (55–75 m<sup>2</sup>)  
Beds per flat 2–4  
Daily rate without visitor's tax € 64–81  
Open January – December  
Minimum stay 3 nights

Our holiday apartments are facing south. Bakery and bus stop about 100 m away. Parking is available next to the house.  
Free of charge: bicycles for rent, Wifi, telephone, bed linen, towels. Children up to 5 years stay with us for free.



# Adoris Ferienappartements



**PLAN D9 | F12**  
Train 1.0 | Bus 0.3 | Lake 0.1 km

Doris & Markus Scherbaum  
Giebelbachstraße 7 | Schmiedgasse 9  
88131 Lindau  
Tel +49 8382 22305  
Fax +49 8382 2740684  
info@adoris-fewo.de  
www.adoris-fewo.de

13 flats (26–75 m<sup>2</sup>)  
Beds per flat 2–4  
Daily rate without tourist tax € 60–135  
Open January – December  
Minimum stay 5 nights

Our apartments (picture on the right) are located at the entrance of the island and offer an excellent location for tourists as well as visitors attending conferences. Parking areas, congress center and city park in immediate vicinity. In the "Lotzbeckpark am See" (picture on the left) you will find our apartments in a quiet, sunny location. The mediterranean outdoor area with its palm trees and cypresses makes for a pleasant southern holiday mood. Free parking available.



# Appartementhaus Alice



**PLAN F10**  
Train 0.7 | Bus 0.1 | Lake 0.0 km

Appartementhaus Alice  
Klaus Nahm  
Bregenzer Straße 9 | 88131 Lindau  
Tel +49 8382 274870  
Mobil +49 170 5773151  
info-alice@web.de  
www.lindau-appartements-alice.de

6 flats (50–70 m<sup>2</sup>)  
Beds per flat 2–6  
Daily rate without tourist tax € 55–85  
Open January – December  
Minimum stay 2 nights

Central location close to the lake in the "Toskana-Park" in front of the island. Partial lake and mountain view. Appr. 150 m to the island, 50 m to the lake/park, 8 – 10 mins to the beach and 3 mins to the indoor pool: Experience a holiday without using your car. The spacious and comfortably furnished apartments invite you to relax. Ship, bus and train connections just around the corner. Feel free to contact us for information – we are looking forward to welcoming you.



# Luxus am Toskanapark F\*\*\*\*\*



**PLAN F10**  
Train 1.5 | Bus 0.1 | Lake 0.1 km

WHG GmbH, Conny Maier  
Bregenzer Str. 11 | 88131 Lindau  
Telefon +49 178 7358543  
info@luxus-ferienwohnung-bodensee.de  
www.luxus-ferienwohnung-bodensee.de

1 flat (130 m<sup>2</sup>)  
Beds per flat 5  
Daily rate without tourist tax 212–280 €  
Open January – December  
Minimum stay 3 nights



# Appartementhaus Angelika 2x F\*\*\*\*\*3x F\*\*\*\*



**PLAN D12**  
Train 0.5 | Bus 0.1 | Lake 0.1 km

Walter Hotz  
In der Hofstatt 5 | 88131 Lindau  
Tel +49 8382 944444  
appartementhaus-angelika@t-online.de  
www.appartementhaus-angelika.de

5 flats (40–70 m<sup>2</sup>)  
Beds per flat 2–4  
Daily rate without tourist tax € 72–145  
Open January – December  
Minimum stay 3 nights



# Appartementhaus Degelstein 2x F\*\*\*\*



**PLAN B8**  
Train 3.0 | Bus 0.1 | Lake 0.2 km

Gina Jäckel  
Schachener Straße 201 | 88131 Lindau  
Tel +49 8382 3501  
mail@hausdegelstein.de  
www.hausdegelstein.de

2 flats (55–60 m<sup>2</sup>)  
Beds per flat 2–3  
Daily rate without tourist tax € 70–90  
Open January – December  
Minimum stay 4 nights



# Ferienwohnung Dr. Guzinski F\*\*\*\*



**PLAN H8**  
Train 4.0 | Bus 0.1 | Lake 1.5 km

Dr. Günther Guzinski  
Wannental 28  
88131 Lindau  
Tel +49 8382 975454  
info@guzinski-luta.de

1 flat (61 m<sup>2</sup>)  
Beds per flat 3  
Daily rate without tourist tax € 79–95  
Open January – December  
Minimum stay 5 nights



# Haus Hensler 2x F\*\*\*\*



**PLAN E12**  
Train 0.6 | Bus 0.1 | Lake 0.2 km

Marktplatz 1 | 88131 Lindau  
Tel +49 7528 7872  
Mobile +49 171 4332865  
info@ferienwohnung-hensler.de  
www.ferienwohnung-hensler.de

2 flats (72–91 m<sup>2</sup>)  
Beds per flat 4  
Daily rate without tourist tax € 100–170  
Open January – December  
Minimum stay 3 nights



# Villa Kunterbunt F\*\*\*\*



**PLAN B8**  
Train 4.4 | Bus 0.1 | Lake 0.5 km

Carmen Ilgen  
Dennenmoos 4  
88131 Lindau  
Tel +49 8382 280932  
info@lindau-villa-kunterbunt.de  
www.lindau-villa-kunterbunt.de

1 flat (125 m<sup>2</sup>)  
Beds per flat 6–7  
Daily rate without tourist tax from € 140  
Open January – December



my second home 1x F \*\*\*\* 1x F \*\*\*\*



Roland Böhm  
Holbeinstraße 80 | 88131 Lindau  
Mobil +49 172 7180132  
0838223234@t-online.de  
www.my-second-home.com  
2 flats (60/66 m²) | Beds per flat 4/5  
Daily rate without tourist tax from €95/115  
Open January – December  
Minimum stay 4 nights | shorter stays possible on agreement

**PLAN D8**  
Train 3.1 | Bus 0.0 | Lake 0.75 km



Bio-Obst & Ferienhof Schöngarten



4x F \*\*\*\* | 2x F \*\*\*\*  
Stefan Büchele  
Schöngartenstraße 18 | 88131 Lindau  
Tel +49 8382 945190  
info@ferienhof.de  
www.ferienhof.de  
6 flats (55–100 m²)  
Beds per flat 2–4  
Daily rate without tourist tax € 65–140  
Open January – December

**PLAN E8**  
Train 2.7 | Bus 0.4 | Lake 1.2 km



Landhof Schielin F \*\*\*\*



Silke Schielin  
Motzacher Weg 45 | 88131 Lindau  
Tel +49 8382 72947  
info@landhof-schielin.de  
www.landhof-schielin.de  
4 flats (43–63 m²)  
Beds per flat 2–3  
Daily rate without tourist tax € 50–85  
Open April – October  
Minimum stay 5 nights

**PLAN G7**  
Train 3.0 | Bus 0.1 | Lake 2.5 km



Ferienwohnung Schurr F \*\*\*\*



Arthur Schurr  
Oberreitner Weg 22  
88131 Lindau  
Tel +49 8382 73598  
arvaschu@web.de  
1 flat (66 m²)  
Beds per flat 3  
Daily rate without tourist tax € 60–70  
Open March – November  
Minimum stay 5 nights

**PLAN G8**  
Train 3.0 | Bus 0.2 | Lake 1.5 km

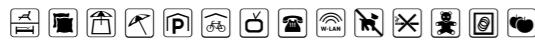


Brög Obst- & Weinbau F \*\*\*\*



Kellereiweg 30 | 88131 Lindau  
Tel +49 8382 977944  
Mobil +49 176 75981488  
info@broeg-schoenau.de  
www.broeg-schoenau.de  
1 flat (45 m²)  
Beds per flat 2 + cot  
Daily rate without tourist tax € 70  
Open January – December  
Minimum stay 5 nights

**PLAN D6**  
Train 5.0 | Bus 0.2 | Lake 5.0 km



Obst- & Ferienhof Hagg 2x F \*\*\*\*



Edeltrud Hagg  
Bechtersweiler 30a  
88131 Lindau  
Tel +49 8382 5320  
ferienhof-hagg@t-online.de  
3 flats (60–105 m²)  
Beds per flat 4–6  
Daily rate without tourist tax € 60–110  
Open January – December  
Minimum stay 4 nights

**PLAN A2**  
Train 6.0 | Bus 2.0 | Lake 4.0 km



Ferienhaus Alpenblick



Helmut & Brigitte Fleck  
Rotmoosstraße 32  
88131 Lindau  
Tel +49 8382 74254  
physio-rotmoos@web.de  
2 flats (40–46 m²)  
Beds per flat 3–4  
Daily rate without tourist tax € 50–100  
Open January – December  
Minimum stay 3 nights

**PLAN G8**  
Train 4.0 | Bus 0.1 | Lake 3.0 km



Haus Baumgarten



Angela Heider-Feustel  
Auf der Mauer 3a | 88131 Lindau  
Tel +49 176 20705393  
zumbaumgarten@web.de  
www.baumgarten-lindau.de  
2 flats (45 m²)  
Beds per flat 2–3  
Daily rate without tourist tax € 80–100  
Open January – December  
Minimum stay 5 nights

**PLAN E12**  
Train 0.7 | Bus 0.3 | Lake 0.2 km



Landhaus Hertnagel 2x F \*\*\*\*



Angela & Helmut Hertnagel  
Oberreitnauer Str. 72 | 88131 Lindau  
Tel +49 8382 6216 or 23824  
kontakt@landhaushertnagel-hausangela.de  
www.landhaushertnagel-hausangela.de  
3 flats (36–80 m²)  
Beds per flat 2–4  
Daily rate without tourist tax € 48–90  
Open January – December  
Minimum stay 3 nights

**PLAN E7**  
Train 3.0 | Bus 0.1 | Lake 2.4 km



Ferienwohnung Klein F \*\*\*\*



Annemarie Klein  
Rotmoosstraße 29 | 88131 Lindau  
Tel +49 8382 73647  
klein.annemarie@online.de  
www.ferien-bei-klein.de  
1 flat (60 m²)  
Beds per flat 2  
Daily rate without tourist tax € 58  
Open April – October  
Minimum stay 5 nights

**PLAN G8**  
Train 1.5 | Bus 0.5 | Lake 1.5 km



Brög Margareta & Wolfgang



Wannental 2  
88131 Lindau  
Tel +49 8382 72896  
fambroeg@hotmail.com  
1 flat (63 m²)  
Beds per flat 2  
Daily rate without tourist tax € 55  
Open May – October  
Minimum stay 5 nights

**PLAN H8**  
Train 3.7 | Bus 0.1 | Lake 2.0 km



Eva Brombeiß



Eva Brombeiß  
Dennenmoos 1  
88131 Lindau  
Tel +49 8382 23533  
1 flat (90 m²)  
Beds per flat 5  
Daily rate without tourist tax € 90–105  
Open January – December  
Minimum stay 7 nights

**PLAN B8**  
Train 1.0 | Bus 0.1 | Lake 0.1 km



Ferienwohnung Resi u. Karl Meßmer 2x F \*\*\*\*



Resi & Karl Meßmer  
Heimesreutin 22 | 88131 Lindau  
Tel +49 8382 4540  
Fax +49 8382 21634  
messmer.heimesreutin@t-online.de  
3 flats (35–70 m²)  
Beds per flat 2/4  
Daily rate without tourist tax € 50–85  
Open January – December  
Minimum stay 4 nights

**PLAN F6**  
Train 3.0 | Bus 0.6 | Lake 2.5 km



Ferienwohnung Bernd Ockert F \*\*\*\*



Bernd Ockert  
Schöngartenstraße 54  
88131 Lindau  
Tel +49 151 46106672  
bernd.ockert@t-online.de  
1 flat (48 m²) | Beds per flat 2  
Daily rate without tourist tax € 60  
from 10 days € 55  
Open March – October  
Minimum stay 5 nights

**PLAN E7**  
Train 3.0 | Bus 0.3 | Lake 3.0 km



Ferienwohnung Carmen



Carmen Fischer  
Schulstraße 32 | 88131 Lindau  
Tel +49 7062 61782  
fewolindau@aol.de  
www.carmen-fischer.de  
1 flat (66 m²)  
Beds per flat 2–4  
Daily rate without tourist tax € 45–60  
Open January – December  
Minimum stay 3 nights

**PLAN G8**  
Train 4.0 | Bus 0.3 | Lake 2.0 km



Casa Daniela Bad Schachen



Daniela Schmid  
Oeschländerweg 16 | 88131 Lindau  
Tel +49 173 8624232  
da133@web.de | www.casa-daniela.de  
4 flats (50 m² each)  
Beds per flat 2–4  
Daily rate without tourist tax € 80–100  
Open January – December  
Minimum stay 4 nights, 7 nights from July – August

**PLAN C8**  
Train 2.5 | Bus 0.0 | Lake 0.2 km



### Bio Ferienwohnungen Ellensohn



Anne & Lena Ellensohn, Ludwig Lipp  
Maximilianstraße 12 | 88131 Lindau  
Tel + 49 8382 6954  
info@lindauer-insel.de  
www.lindauer-insel.de

Apartments in Zitronengässle  
Beds per flat 2-4  
Daily rate without tourist tax €85-170  
Open January - December  
Minimum stay 5 nights

**PLAN E13**  
Train 0.4 | Bus 0.1 | Lake 0.1 km



### Landhaus Haug



Johannes und Philipp Haug GbR  
Schachener Straße 211 | 88131 Lindau  
Tel +49 8382 4188  
info@landhaushaug.de  
www.landhaushaug.de

5 flats (40-65 m<sup>2</sup>)  
Beds per flat 2-4  
Daily rate without visitor's tax €60-98  
Open January - December  
Minimum stay 3 nights

**PLAN B8**  
Train 3.0 | Bus 0.1 | Lake 0.2 km



### Ferienwohnungen Am Rehberg



Hotel Am Rehberg | Familie Bast KG  
Am Rehberg 29 | 88131 Lindau  
Tel +49 8382 3329  
info@lindauhotels.de  
www.lindauhotels.de/ferienwohnung

5 flats (29-48 m<sup>2</sup>)  
Beds per flat 2-4  
Daily rate without tourist tax €42-98  
Open March - October  
Minimum stay 4 nights

**PLAN E/F9**  
Train 1.5 | Bus 0.1 | Lake 0.5 km



### Gästehaus Reischmann



Ralf Reischmann  
Unterreitnauer Str. 50 | 88131 Lindau  
Tel +49 8382 2733751  
kontakt@haus-reischmann.de  
www.haus-reischmann.de

4 flats (55 m<sup>2</sup>)  
Beds per flat 3-4  
Daily rate without tourist tax €65-90  
Open January - December  
Minimum stay 5 nights

**PLAN C/D3**  
Train 5.0 | Bus 0.5 | Lake 4.0 km



### Ferienwohnung Hodrius am See



Zwanzigerstraße 16 | 88131 Lindau  
Tel +49 8388 414 | +49 171 9554593  
Fax +49 8388 920589  
g.hodrius@t-online.de

1 flat (45 m<sup>2</sup>)  
Beds per flat 2  
Daily rate without tourist tax €65  
14 days and more €60  
Open January - December  
Minimum stay 7 nights

**PLAN D12**  
Train 0.4 | Bus 0.0 | Lake 0.0 km



### Ferienwohnung Inselkoje



Ratsstuben GbR | Familie Karl  
Ludwigstraße 7 | 88131 Lindau  
Tel +49 8382 6626  
kontakt@ratsstuben.info  
www.ratsstuben.li

1 flat (70 m<sup>2</sup>)  
Beds per flat 2-3  
Daily rate without tourist tax €96-106  
Open January - December  
Minimum stay 5 nights

**PLAN E13**  
Train 0.5 | Bus 0.2 | Lake 0.2 km



### Hotelbetriebsgesellschaft Reulein mbH



Ester Kowatsch  
Steigstraße 28 | 88131 Lindau  
Tel +49 8382 96450  
hotel-reulein@t-online.de  
www.hotel-reulein.de

1 flat (85 m<sup>2</sup>)  
Beds per flat 4  
Daily rate without tourist tax €110-180  
Open January - December  
Minimum stay 3 nights

**PLAN H8**  
Train 4.0 | Bus 0.0 | Lake 2.0 km



### Haus Ritter



Georg & Martin Ritter  
Tannhofweg 4 | 88131 Lindau  
Tel +49 8320 428  
Fax +49 8320 925711  
haus\_ritter@web.de

1 flat (45 m<sup>2</sup>)  
Beds per flat 2  
Daily rate without tourist tax €62  
Open January - December  
Minimum stay 7 nights

**PLAN F9**  
Train 1.5 | Bus 0.2 | Lake 0.5 km



### Ferienwohnung Köhler



Thomas Köhler  
Bahnweg 3 | 88131 Lindau  
Tel +49 176 47221966  
TK007@freenet.de  
www.fewo-lindau-bodensee.de

1 flat (60 m<sup>2</sup>)  
Beds per flat 2-4  
Daily rate without tourist tax €60-80  
Open June - September  
Minimum stay 3 nights

**PLAN D8**  
Train 5.0 | Bus 0.2 | Lake 4.0 km



### Kreitmeir Lilo



In der Grub 17 | 88131 Lindau  
Tel +49 8382 23330  
Mobil +49 175 9708584  
lilo.kreitmeir@gmail.com  
www.hermann.de

4 flats (44-65 m<sup>2</sup>)  
Beds per flat 3-5  
Daily rate without tourist tax €70-145  
Open January - December  
Minimum stay 1 night

**PLAN D12**  
Train 0.5 | Bus 0.1 | Lake 0.2 km



### Ferienwohnung Zum See



Ulf Tausch  
Vordere Metzgergasse 3 | 88131 Lindau  
Tel +49 751 55782277  
weidach@yahoo.de  
www.lindau-fewo.de

1 flat (80 m<sup>2</sup>)  
Beds per flat 5  
Daily rate without tourist tax €80-110  
Open January - December  
Minimum stay 3 nights

**PLAN D13**  
Train 0.3 | Bus 0.3 | Lake 0.1 km



### Doris Stache



Hasenweidweg 21  
88131 Lindau  
Tel +49 8382 3794 oder 977351  
info@stache-fewo.de  
www.stache-fewo.de

2 flats (50-60 m<sup>2</sup>)  
Beds per flat 2-4  
Daily rate without tourist tax €64-79  
Open January - December  
Minimum stay 5 nights

**PLAN E9**  
Train 1.0 | Bus 1.0 | Lake 0.3 km



### Ferienwohnungen Klaus Pavlitschek



Klaus Pavlitschek  
Schachener Straße 203 | 88131 Lindau  
Tel/Fax +49 8382 5043414  
ferienwohnungen-pavlitschek@gmx.de  
www.ferienwohnungen-pavlitschek.de

2 flats (40-43 m<sup>2</sup>)  
Beds per flat 2  
Daily rate without tourist tax €60  
Open March - October  
Minimum stay 5 nights

**PLAN B8**  
Train 3.5 | Bus 0.5 | Lake 0.6 km



### Haus zum Nussbaum



Wolfgang Seethaler  
Spitalmühlweg 6 | 88131 Lindau  
Tel +49 8382 274800  
info@gartenimpulse.de  
www.gartenimpulse.de

2 flats (25-70 m<sup>2</sup>)  
Beds per flat 2-3  
Daily rate without tourist tax €50-125  
Open January - December  
Minimum stay 5 nights (July/Aug.: 7)

**PLAN F7**  
Train 3.0 | Bus 0.3 | Lake 3.0 km



### Ferien in der Stadtoase



Thomas Graf  
Bleicheweg 15 + 19b | 88131 Lindau  
Tel +49 176 41258652  
info@fewo-stadtoase.de  
www.fewo-stadtoase.de

2 flats (53-57 m<sup>2</sup>)  
Beds per flat 2-5  
Daily rate without tourist tax €85  
Open January - December  
Minimum stay 3 nights

**PLAN F9**  
Train 1.8 | Bus 0.2 | Lake 0.8 km



### Ferienwohnung Vogler-Merz



Brougierstraße 41 | 88131 Lindau  
Tel +49 8382 3974  
Fax +49 3221 2358080  
info@fewolindau.de  
www.fewolindau.de

1 flat (74 m<sup>2</sup>)  
Beds per flat 4  
Daily rate without tourist tax €60-70  
Open January - December  
Minimum stay 4 nights (July/Aug.: 10)

**PLAN E9**  
Train 1.5 | Bus 0.1 | Lake 0.5 km



### Landhaus im Weingut



Sonja Deufel  
Schachenerstraße 213 | 88131 Lindau  
Tel +49 8382 93440  
wohnungen@weingut-deufel.de  
www.weingut-deufel.de

7 flats (55–102 m<sup>2</sup>)  
Beds per flat 2–6  
Daily rate without tourist tax € 87–130  
Open January – December  
Minimum stay 3 nights

**PLAN B8**

Train 2.0 | Bus 0.2 | Lake 0.2 km



### Landhaus Meroth P \*\*\*



Immenreich 7a | 88131 Lindau  
Tel +49 8382 2776116  
renate@meroth-lindau.de  
www.meroth-lindau.de

Number of beds 6  
2 DR € 37.50–42.50 pp  
1 Suite € 47.50 pp  
DR as SR on request € 60/65/70  
breakfast  
Open January – December

**PLAN E7**

Train 1.8 | Bus 0.3 | Lake 1.8 km



# Salem Monastery and Palace

Come. See. Enjoy.

Castle grounds with courtyard and labyrinths · Baroque palace rooms · Gothic minster · Monastery Museum · Fire Brigade Museum · Adventure playground · Artisans workshops · Restaurants

Free entrance with the Bodensee Card <sup>PLUS</sup>  
88682 Salem · Phone +49(0)75 53.9 16 53 - 36  
Opened daily from 28. March – 1. November

[www.salem.de](http://www.salem.de)



## PROPRIETORS IN ALPHABETICAL ORDER

- A Adara**, Boutique-Hotel | p. 81  
**Adler**, Hotel-Gasthof | p. 80  
**Adoris**, Ferienappartements | holiday flat | p. 84  
**Alice**, Appartementhaus | holiday flat | p. 85  
**Alpenblick**, Ferienhaus | holiday flat | p. 87  
**Alte Schule**, Hotel | p. 76  
**Am Rehberg** | holiday flat | p. 89  
**Am Rehberg**, Hotel garni \*\*\*\* | p. 75  
**Angelika**, Appartementhaus | holiday flat | 2x F\*\*\*\*, 3x F\*\*\* | p. 85
- B Bad Schachen**, Hotel | p. 80  
**Baumgarten**, Haus | holiday flat | p. 87  
**Bayerischer Hof**, Hotel \*\*\*\*\* | p. 74  
**Bernd Ockert** | holiday flat F\*\*\* | p. 86  
**Best Western Plus Marina Star**, Hotel | p. 80  
**Breyer**, Gästehaus | p. 82  
**Brög**, Obst- & Weinbau | holiday flat | F\*\*\* | p. 86  
**Brög**, Margareta & Wolfgang | holiday flat | p. 87  
**Brugger**, Hotel garni | p. 79
- C Carmen** | holiday flat | p. 87  
**Casa Daniela** Bad Schachen | holiday flat | p. 87
- D Das Mietwerk**, Hostel Lindau | p. 83  
**Degelstein**, Appartementhaus | holiday flat | 2x F\*\*\*\* | p. 85  
**Doris Stache** | holiday flat | p. 89
- E Ebner**, Hotel Café \*\*\* S | p. 81  
**Ellensohn**, Bio Ferienwohnung | holiday flaten | p. 88  
**Eva Brombeiß** | holiday flat | p. 87
- F Ferien in der Stadtoase** | holiday flat | p. 89
- G Gitzenweiler Hof**, Campingpark \*\*\*\*\* | p. 83  
**Guzinski, Dr.** | holiday flat | F\*\*\*\* | p. 85
- H Hagg**, Obst- & Ferienhof | holiday flat | 4x F\*\*\* | p. 86  
**Hanssen** | holiday flat | F\*\*\*\*\* | p. 84  
**Haug, Landhaus** | holiday flat | p. 88  
**Hensler, Haus** | holiday flat | 2x F\*\*\*\* | p. 85  
**Hertnagel, Landhaus** | holiday flat | 2x F\*\*\* | p. 86  
**Hodrius am See** | holiday flat | p. 88
- I Im Weingut**, Landhaus | holiday flat | p. 90  
**Inselgraben**, Hotel Gasthof garni | p. 81  
**Inselkoje** | holiday flat | p. 88
- J Jugendherberge Lindau** | p. 83
- K Klaus Pavlitschek** | holiday flat | p. 88  
**Klein** | holiday flat | F\*\*\* | p. 86  
**Köchlin**, Hotel Landgasthof | p. 81  
**Köhler** | holiday flat | p. 88  
**Kreitmeir, Lilo** | holiday flat | p. 88  
**Kunterbunt**, Villa | holiday flat | F\*\*\*\* | p. 85
- L Lindauer Hof**, Hotel \*\*\*\* | p. 78  
**Luxus am Toskanapark** | holiday flat | F\*\*\*\*\* | p. 85
- M Martinsmühle**, Landhotel \*\*\* | p. 80  
**Meroth**, Landhaus | Privatzimmer | P\*\*\* | p. 90  
**Möve**, Hotel garni | p. 82  
**my second home** | holiday flat | p. 86
- N Noris**, Hotel | p. 82
- P Park-Camping Lindau am See** | p. 83
- R Ratsstuben**, Hotel | p. 82  
**Reischmann**, Gästehaus | holiday flat | p. 89  
**Resi u. Karl Meßmer** | holiday flat | 2x F\*\*\* | p. 86  
**Reulein**, Hotel garni | p. 77  
**Reulein**, Hotelbetriebsgesellschaft mbH | Holiday flat | p. 89  
**Reutemann/Seegarten**, Hotel \*\*\*\* | p. 74  
**Reutin** | holiday flaten | 3x F\*\*\* | p. 84  
**Ritter**, Haus | holiday flat | p. 89
- S Schachener Hof**, Hotel Restaurant | p. 81  
**Schielin**, Landhof | holiday flat | p. 87  
**Schönau**, Hotel \*\*\* | p. 81  
**Schöngarten**, Bio-Obst & Ferienhof | holiday flat | 4x F\*\*\*\*, 2x F\*\*\* | p. 86  
**Schöngarten**, Hotel garni \*\*\* S | p. 81  
**Schurr** | holiday flat | F\*\*\* | p. 87  
**Seereich**, Hotel & Pension | p. 79
- V Villino**, Relais & Châteaux Hotel | p. 82  
**vis à vis**, Hotel \*\*\* | p. 78  
**Vogler-Merz** | holiday flat | p. 89
- Z Zum Nussbaum**, Haus | holiday flat | p. 88  
**Zum See** | holiday flat | p. 89  
**Zum Zecher**, Gasthof | p. 82

# BY SHIP TO THE FLOWER ISLAND

MAINAU

## THE MAINAU-COMBITICKET

*The most beautiful way to get to the island of Mainau may well be by boat. Enjoy an unforgettable day on and around Lake Constance. You can relax while travelling to and from Mainau and leave the stress and traffic jams behind. Once you arrive you can experience the glorious gardens, the Baroque palace and the butterfly house.*

*The 'Weiße Flotte' boats travel to and from Mainau every day. The affordable ticket combines the cruise on Lake Constance and the entrance fees to the island.*



**With the quick course directly from Lindau to the flower island.**

More infos at [www.bsb.de](http://www.bsb.de)

## GETTING HERE & GETTING AROUND



### BY TRAIN

To Lindau main station

### BY CAR

From the direction of Memmingen:

A96 until the exit for Lindau

From the direction of Austria:

Rheintal-Autobahn A14, through the Pfänder tunnel until the exit for Lindau

### BY PLANE

Friedrichshafen: [www.bodensee-airport.eu](http://www.bodensee-airport.eu)

Memmingen: [www.allgaeu-airport.de](http://www.allgaeu-airport.de)

Munich: [www.munich-airport.de](http://www.munich-airport.de)

Zurich: [www.flughafen-zuerich.ch](http://www.flughafen-zuerich.ch)

Stuttgart: [www.flughafen-stuttgart.de](http://www.flughafen-stuttgart.de)

Innsbruck: [www.innsbruck-airport.com](http://www.innsbruck-airport.com)

### BUS

With the bus you can stay mobile in the whole Lindau area. If you stay overnight in Lindau, you receive the Lindau guest card with which you can use the Lindau buses for free between 1 April and 31 October 2020.

## INFO & CONTACT

### LINDAU TOURISMUS & KONGRESS GMBH

#### Tourist Information Office on the island

Alfred-Nobel-Platz 1, D-88131 Lindau

Tel. +49 8382 260030

Fax +49 8382 260026

info@lindau-tourismus.de

[www.lindau.de](http://www.lindau.de)

#### Opening times

**1 January – 03 April 2020**

Mon – Fri: 10:00 a.m. – 12:00 p.m. & 2:00 p.m. – 5:00 p.m.

**04 April – 16 October 2020**

Mon & Tues: 9:30 a.m. – 5:30 p.m.

Wed: 9:30 a.m. – 12:30 p.m. & 2:00 a.m. – 5:30 p.m.

Thurs – Sat: 9:30 a.m. – 5:30 p.m.

Sun: 9:30 a.m. – 12:30 p.m.

**19 October – 31 December 2020**

Mon – Fri: 10:00 a.m. – 12:00 p.m. & 2:00 p.m. – 5:00 p.m.

#### Additionally during the

#### Lindau Harbour Christmas Market

(26 November to 20 December 2020)

Sat & Sun: 11:00 a.m. – 3:00 p.m.

#### Advance ticket sales

for the Lindau Puppet Theatre, Bregenz

Festival and additional cultural events.

You can also get combi-tickets for the boat trip and the Bodensee Card PLUS directly in the Tourist Information.

#### Brochure enquiry

[www.lindau.de/en/order-brochures](http://www.lindau.de/en/order-brochures)

#### Room booking

[booking.lindau-tourismus.de](http://booking.lindau-tourismus.de)

#### Guided tours, group tours

[www.lindau.de/bestellung-gruppenfuehrung](http://www.lindau.de/bestellung-gruppenfuehrung)

#### Infopoint Bad Schachen

Museum friedens räume

Lindenhofweg 25, D-88131 Lindau

#### INSELHALLE LINDAU

Zwanzigerstraße 10, D-88131 Lindau

Tel. +49 8382 8899600

Fax +49 8382 8899800

info@inselhalle-lindau.de

[www.inselhalle-lindau.de](http://www.inselhalle-lindau.de)

#### Gastronomy – DECK12

Zwanzigerstr. 12, D-88131 Lindau

Tel. +49 8382 8899650

office-lindau@chefpartie.at

[www.deck12-lindau.de](http://www.deck12-lindau.de)

#### BODENSEE TRIPS & TOURS

Incoming agency for the

Lake Constance four-country region

Linggstr. 3, D-88131 Lindau

Tel. +49 8382 8899-719

Fax +49 8382 8899-819

lina.flohr@lindau.tourismus.de

[www.bodensee-trips-tours.com](http://www.bodensee-trips-tours.com)



Meersburg New Palace, staircase



Meersburg New Palace, garden pavilion



Meersburg New Palace, stucco ceiling



Meersburg Prince's Vineyard House



Meersburg Prince's Vineyard House, salon



Meersburg New Palace

PHOTO CREDIT: SSG / LMZ; 1. Armin Weisberg; 2. Helmut Schanz; 3. Credit unbaroque; 4.5. Bernhard Wiesel; 6. Helmut Schanz // Design concept: www.jungmannstudio.de

## MEERSBURG NEW PALACE AND PRINCE'S VINEYARD HOUSE

Baroque splendor and Biedermeier treasure

**Visiting the prince-bishops:** Baroque residence · Garden terrace with view of Lake Constance · Splendid staircase · Majestic hall of mirrors · Castle museum in the bel étage  
**Visiting Annette von Droste-Hülshoff:** Biedermeier furnishings · Portraits and manuscripts · Audio and media stations · Garden with view of Lake Constance

Experience more with the combo ticket (Meersburg New Palace and Prince's Vineyard House)  
Open daily, April 1 – November 1.

[www.neues-schloss-meersburg.de](http://www.neues-schloss-meersburg.de)  
[www.fuerstenhaeusle.de](http://www.fuerstenhaeusle.de)



Baden-Württemberg



## INTERESTING FACTS FROM A – Z

### BARS

#### BarBarista

Marktplatz 1  
Tel. +49 8382 2747157  
www.barbarista-lindau.de

#### Coco Loco

Ludwigstraße 42

#### Grisu Billard-Café

Bregenzer Straße 103  
Tel. +49 8382 74956

#### Großstadt

In der Grub 27  
Tel. +49 8382 5042998  
www.grossstadt-lindau.de

#### Loge 1

Zwanzigerstr. 3  
Tel. +49 8382 9433844  
www.loge1-lindau.com

#### Mike's Irish Pub

In der Grub 34  
Tel. +49 8382 6969

#### Mojito

In der Grub 32  
Tel. +49 171 3152326

#### Ottimo

Bahnhofplatz 1e  
Tel. +49 8382 93470

#### Scotch Club

Hofstattgasse 2  
Tel. +49 8382 5043125

#### Seaside Bar

Salzgasse 3  
Tel. +49 8382 6043355

#### 37° Kaffeebar Ladengeschäft

Bahnhof 1e  
Tel. +49 8382 2770803  
www.37grad.eu

### BEER GARDENS

#### Hotel Restaurant Alte Post

Fischergasse 3  
Tel. +49 8382 93460  
www.alte-post-lindau.de

#### Landgasthof Köchlin

Kemptener Str. 41  
Tel. +49 8382 96600  
www.hotel-koechlin.de

#### Strandcafé Lindenhof

Lindenhofweg 41  
Tel. +49 8382 9111316  
www.strandcafe-lindenhof.de

### Weinstube Reutin

Kemptener Str. 45  
Tel. +49 8382 975550  
www.weinstube-reutin-lindau.de

### Wissingers im Schlechterbräu

In der Grub 28  
Tel. +49 8382 5042742  
www.wissingers.de

### Zur Alten Werft

Brettermarkt 9  
Tel. +49 8382 5224

### BIKE GARAGES

#### Inselhalle P4

underground car park  
Zwanziger Straße 6

### BIKE RENTAL

#### Der Radgeber GmbH

Wackerstraße 11  
Tel. +49 8382 9893400  
www.radgeber-lindau.de

#### Fahrradverleih in der Jugendherberge Lindau

Herbergsweg 11  
Tel. +49 176 51312142 oder  
Tel. +49 175 4866072  
www.fahrradverleih-lindau.de

#### Radinsel

Dammsteggasse 4  
Tel. +49 170 9862370  
www.radinsel.eu

#### Radsport Jausovec, Fahrradverleih

Schulstr. 28  
Tel. +49 8382 79870  
www.radsport-jausovec.de

#### Unger Fahrrad und Verleih

Inselgraben 14  
Tel. +49 8382 943688  
www.fahrrad-unger.de

### BIKE RICKSHAW

#### Feitzis Rikscha

Tel. +49 173 8536965  
www.feitzis-rikscha.de

### BIKE SHOPS/ REPAIR SERVICES

Fahrradies  
Schönauer Str. 102  
www.fahrradies-lindau.de

#### Radstation Lindau

Kemptener Str. 16  
www.fahrradstation-lindau.de

### Der Radgeber GmbH

Wackerstraße 11  
Tel. +49 8382 9893400  
www.radgeber-lindau.de

### Radsport Jausovec, Fahrradverleih

Schulstr. 28  
Tel. +49 8382 79870  
www.radsport-jausovec.de

### Unger Fahrrad und Verleih

Inselgraben 14  
Tel. +49 8382 943688  
www.fahrrad-unger.de

### BOAT RENTAL

(rowing/pedal/motorboats)  
**Bootsverleih Hodrius**  
next to Inselhalle  
Tel. +49 8382 297771  
www.bootsverleih-lindau.de

### Bootsvermietung Lindau

on the bridge in the 'little lake'  
Tel. +49 8382 5514  
www.bootsvermietung-lindau.de

### BOAT TRIPS

#### Bodensee-Schiffsbetriebe

Tel. +49 8382 275840  
www.bsb.de

#### Schiffsbetrieb Wiehrer

Tel. +49 8382 78194  
www.ms-bayern.de

#### Hohentwiel Schifffahrts-gesellschaft

Tel. +43 5574 63560  
www.hohentwiel.com

### CANOE / KAYAK RENTAL

#### Adfunture Outdoor GmbH

Kemptener Straße 67  
Tel. +49 8382 74921  
www.adfunture.de

#### Strandcafé Lindenhof

Lindenhofweg 41  
Tel. +49 8382 9111316  
www.strandcafe-lindenhof.de

### VDWS Surfschule

#### Kreitmeir Lindau

Eichwaldstraße 20  
Tel. +49 8382 9976570  
www.surfschulelindau.de

### CAR RENTAL

#### Buchbinder Autovermietung

Bregenzer Straße 27  
Tel. +49 8382 2774910  
www.buchbinder.de

### Europcar Autovermietung

Peter-Dornier-Straße 1  
Tel. +49 8382 2759136  
www.europcar.de

### Hertz Autovermietung

Agentur Martina Boll  
Bregenzer Straße 20a-22  
Tel. +49 8382 94000  
www.hertz.de

### Sixt Autovermietung

Bregenzer Straße 121  
Tel. +49 89 66060060  
www.sixt.de

### CAR SHARING

#### BodenseeMobil e.V.

Tel. +49 7541 489340  
www.bodenseemobil.de

### CASINO

#### Bayerische Spielbank Lindau

Chelles-Allee 1  
Tel. +49 8382 27740  
www.spielbanken-bayern.de

### CHARGING STATION FOR ELECTRIC BIKES

#### Der Radgeber GmbH

Wackerstraße 11  
Tel. +49 8382 9893400  
www.radgeber-lindau.de

### Tourist-Information

Alfred-Nobel-Platz

#### Inselhalle P4 underground car park

Zwanziger Straße 6

### CHARGING STATION FOR ELECTRIC CARS

**P3 car park**  
Karl-Bever-Platz

#### **P4 car park at Inselhalle**

Zwanzigerstraße 8

#### Stadtwerke Lindau

Auenstraße 12

#### Autohaus Unterberger

Peter-Dornier-Str. 2

### ENGIE Refrigeration

Josephine-Hirner Straße 3

www.sw-lindau.de/strom/  
elektromobilitaet

### CINEMA

#### Parktheater Lindau

Zwanzigerstraße 3  
Tel. +49 8382 6900  
www.kino-lindau.de

### CRAZY GOLF COURSES

#### Minigolf-Lindau

Aeschacher Ufer  
Tel. +49 8382 25875  
www.minigolf-lindau.com

#### Minigolf Bad Schachen

Lindenhofweg  
Tel. +49 8382 407077

### CULTURE & EVENTS

#### CASINO

Chelles-Allee 1  
Tel. +49 8382 27740  
www.casinobuehne.de

#### Club Vaudeville e.V.

Von Behring Str. 6-8  
Tel. +49 8382 977116  
www.vaudeville.de

#### Jazzclub Lindau

Bregenzer Straße 146  
Postfach 1326  
www.jazzclublindau.de

#### Lindauer Marionettenoper

Fischergasse 37  
Tel. +49 8382 9113915  
www.marionettenoper.de

#### Stadttheater Lindau

Fischergasse 37  
Tel. +49 8382 9113911  
www.kultur-lindau.de

#### Zeughaus Lindau e.V.

Unterer Schrankenplatz 10  
www.zeughaus-lindau.de

### DAHLIA SHOW LINDAU

Büchelewiesweg  
88131 Lindau  
www.dahlienschau-lindau.de  
open from the middle of August to  
the end of October 2020 daily from  
sunrise to sunset

### FARM SHOPS

#### Aichele Obst

Eichbühlweg 13b + 17,  
Tel. +49 8382 9975015  
www.aichele-obst.de

#### Ferienhof Schmid

Bodenseestraße 35  
Tel. +49 8382 273628  
www.ferienhof-schmid-lindau.com

### Hofladen Büchele

(with a 24-h vending machine)  
Schöngartenstr. 16  
Tel. +49 8382 945190  
www.schoengarten.com

### Hofladen Rogg

(with a 24-h vending machine)  
Paradies 45  
Tel. +49 8382 22151  
www.ferienhof-rogg-lindau.de

### Hofladen Schlüter

Rickenbacher Straße 125  
Tel. +49 8382 78246  
www.hofladen-schlueter.de

#### Manufaktur für Trockenfrüchte Brög

Kemptener Straße 99,  
Tel. +49 8382 2775870  
www.broeg-obst.de

#### Obstbau & Hofladen Münchhof

Münchhofstraße 5  
Tel. +49 8382 73572  
www.muenchhof.com

#### Obstbau Martin Nüberlin

Breite Straße 12  
Tel. +49 8382 79300  
www.obstbau-nueberlin.de

#### Obstbau Meßmer

Tobelstraße 34  
Tel. +49 8382 6874  
www.obstbau-messmer.de

#### Obsthof Ambrosius

Schöngartenstraße 5  
Tel. +49 8382 5424  
www.facebook.com/Obsthof-Ambrosius

#### Obsthof Brög

Kellereiweg 30  
Tel. +49 8382 4410  
www.broeg-schoenau.de

#### Obsthof Jäger

Motzacher Weg 47  
Tel. +49 8382 72834

#### Obst vom Hammerhof

Kemptener Straße 105  
Tel. +49 8382 7121  
www.hammerhof-lindau.de

#### Schönauer Hofladen

Schönauer Straße 112  
Tel. +49 8382 5111  
www.derheimatapfel.de

### FISHING

You can receive a permit upon  
paying the fee and presenting  
a valid fishing licence at:

### Tourist-Information Lindau

Alfred-Nobel-Platz 1  
Tel. +49 8382 260030  
www.lindau.de

### GOLF

#### Golf-Club

Lindau-Bad Schachen e.V.  
Am Schönbühl 5  
Tel. +49 8382 96170  
www.golfclub-lindau.de

#### Golfclub

Bodensee Weißensberg e.V.  
Lampertsweiler 51  
Tel. +49 8389 89190  
www.gcbw.de

### HARLEY SCOOTER RENTAL SERVICE

#### Harley-Scooter Bodensee

Linggstr.18  
Tel. +49 8382 9424552  
www.harley-scooter.de

### ICE SKATING

#### Eissportarena

Eichwaldstraße 16  
Tel. +49 8382 2751211  
www.eissportarena.li

### INSEL BÄHNLE (LITTLE TRAIN)

#### Bodensee Wegebahnen

Tel. +49 8382 2600999  
www.bodensee-wegebahnen.de  
March –October 2020, departure  
from the harbour from 11:00 a.m. –  
7:00 p.m. appr. every 40 minutes;  
duration of the trip: appr. 25 minutes  
Journey times may be shortened  
due to weather/seasonal condi-  
tions

### KNEIPP BASIN

Aeschacher Ufer

### LIBRARY

#### Lindau Town Library

Maximilianstraße 52  
Tel. +49 8382 2747470  
www.kultur-lindau/buecherei

### MUSEUMS

#### Ehemals Reichsstädtische

#### Bibliothek (ERB)

Reichsplatz (im Alten Rathaus)  
Tel. +49 8382 2747470  
www.kultur-lindau.de/bibliotheks-  
museum/

### Art Museum

#### at the Island Train Station

Maximilianstraße 52,  
Tel. +49 8382 274747850  
www.museum-lindau.de

### Museum friedens räume

Villa Lindenhof  
Lindenhofweg 25  
Tel. +49 8382 24594  
18 April – 18 October 2020:  
Tues – Sat 10:00 a.m. – 5:00 p.m.,  
Sun, holidays 2:00 p.m. – 5:00 p.m.  
www.friedens-raeume.de

### Stadtmuseum Lindau

Marktplatz 6  
Tel. +49 8382 944073  
currently closed for refurbishing  
and renovation work  
www.museum-lindau.de

### PARKING

Parking is subject to charges and  
is time-limited on the whole island  
as well as on the majority of the  
mainland.

**P1** = Blauwiese carpark,  
also for caravans and trailers

**P3** = Karl-Bever-Platz

**P4** = Inselhalle car park

### PARKING FOR COACHES

#### **P3 car park**

Karl-Bever-Platz  
Ladestraße 17 – 22  
www.lindau.de/stadt

### PUBLIC BBQ AREAS

#### Uferpark Wäsen

at the sailing marina in Lindau-  
Zech

#### Seeufer Zech

Bordering on the camping site

### SAILING

#### Segelschule Johanna Autenrieth

Barfüßerplatz 8  
Tel. +49 172 7654474  
www.segelschule-autenrieth.de

#### Bootshaus Lukas Hummler

Heuriedweg 53  
Tel. +49 8382 965555  
www.bootshaus.de

#### Kompas Charter GbR

Lukas Hummler & Nikolaus Jung  
Heuriedweg 53  
Tel. +49 8382 965596  
www.segelbootcharter-bodensee.de

#### STAND-UP PADDLING (SUP)

**Strandcafé Lindenhof**  
Lindenhofweg 41  
Tel. +49 8382 9111316  
www.strandcafe-lindenhof.de

**VDWS Surfschule**  
Kreitmeir Lindau  
Eichwaldstraße 20  
Tel. +49 8382 9976570  
www.surfschulelindau.de

#### SWIMMING POOL – INDOOR

**Familien- & Vitalbad Limare**  
Bregenzer Str. 37  
Tel. +49 8382 704130

#### SWIMMING POOLS – OPEN AIR

**Aeschacher Bad**  
Lotzbeckweg 3  
Tel. +49 8382 23446

**Freibad Oberreitnau**  
Parkweg 8  
Tel. +49 8382 9431166  
www.bb-lindau.de

**Lindenhofbad**  
Lindenhofweg 41  
Tel. +49 8382 9111316  
www.strandcafe-lindenhof.de

**Parkstrandbad**  
at Hotel Bad Schachen  
Bad Schachen 1  
Tel. +49 8382 2980  
www.badschachen.de

#### TAXI SERVICE ON THE LAKE

**Bootsvermietung Daniel Sandau**  
at the bridge in the 'small lake'  
Tel. +49 8382 5514  
www.bootsvermietung-lindau.de

**Sea Taxi – Porto Lindau**  
Seepromenade 3  
Tel. +49 8382 9130  
www.porto-lindau.de

#### TOILETS SUITABLE FOR THE DISABLED

**Main station**  
Next to the main customs office  
'Hauptzollamt' (between  
Rüberplatz and Brettermarkt)

**Inselhalle P4 underground car park**

#### TOURS OF LINDAU

**(only in German)**  
**Classic tours:**  
24 March – 29 October 2020:  
Tuesdays 10:30 a.m.,  
Fridays 2:30 p.m.  
11 April & 11 Juli – 12 September  
2020: Saturdays 3:00 p.m.  
12 April & 5 May – 29 September  
2020: Sundays 10:30 p.m.  
during the Lindau Harbour  
Christmas Market: Thursday, Friday,  
Saturday and Sunday at 3:00 p.m.  
Meeting point: in front of the Old  
Town Hall (north side) on the stairs

**Historical nightwatch tour  
with nightwatchman Michl:**  
1 May – 31 August 2020:  
Wednesdays 21:00 p.m.  
1. June – 31 August 2020:  
Saturdays 9:00 p.m.  
1 September – 31 October 2020:  
Wednesdays 8:00 p.m.  
Meeting point: Tourist Information  
Office

**Historical nightwatch tour  
with the nightwatchwoman:**  
Schedule online at [www.lindau.de](http://www.lindau.de)  
Group tours only with advance  
reservation

**Advent tours:**  
Saturdays at 5:00 p.m.  
On 28/11, 05/12, 12/12,  
19/12/2020  
Meeting point in front of the  
Old Town Hall

#### VINEYARDS

**Weinbau Hansjörg Brög**  
Kellereiweg 30  
Tel. +49 8382 4410  
www.broeg-schoenau.de

**Weingut Teresa Deufel**  
Schachener Str. 213  
Tel. +49 8382 93440  
www.teresadeufel.de

**Wein- und Obstgut Haug**  
Kellereiweg 19  
Tel. +49 8382 5466  
www.weingut-haug.de

#### WATER SKIING

**Bootsvermietung Lindau**  
an der Seebrücke im Kleinen See  
Tel. +49 8382 5514  
www.bootsvermietung-lindau.de

#### WEBCAM LINDAU

[www.lindau.de/webcam](http://www.lindau.de/webcam)

#### WEEKLY MARKET

Tuesdays: Aeschach on the main-  
land / 'Auf der Lärche' carpark,  
8:00 a.m. – 12:30 p.m. (all year)  
Wednesdays: Lindau island /  
Marktplatz, 7:00 a.m. – 1:00 p.m.  
(April – October)  
Saturdays: Lindau island / Markt-  
platz, 7:00 a.m. – 1:00 p.m. (all year)

#### WELLNESS & SPA

**Clarins Beauty Lounge  
Hotel Helvetia**  
Inselgraben 3  
Tel. +49 8382 9130  
www.hotel-helvetia.com

**Maximilian Spa**  
Hotel Bayerischer Hof  
Bahnhofplatz 2  
Tel. +49 8382 915461  
www.bayerischerhof-lindau.de

#### Schachen Bad & Spa

Hotel Bad Schachen  
Bad Schachen 1  
Tel. +49 8382 298500  
www.badschachen.de

**Beauty Institut Zisterer**  
im Hotel VILLINO  
Mittenbuch 6  
Tel. +49 8382 93450  
www.beauty-institut-zisterer.de

#### WIFI HOTSPOTS

Free WLAN in the entire harbour  
area as well as on Maximilianstrasse  
on the island

#### WIND SURFING

**VDWS Surfschule**  
Kreitmeir Lindau  
Eichwaldstraße 20  
Tel. +49 8382 9976570  
www.surfschulelindau.de

#### WINE TASTING (only in German)

Tour of vineyard and cellar in  
Weingut Haug or Obstbau Brög  
with tasting from June – August  
2020; Thursdays at 5:00 p.m.  
Meeting point: Schönauer Dorf-  
brunnen (opposite the 'Schönau'  
bus stop, bus 2 or 3)

#### WINE TAVERNS

**Bier- und Weinstube Engel**  
Schafgasse 4  
Tel. +49 8382 5240  
www.engel-lindau.de

#### Weinstube Reutin

Kemptener Straße 45  
Tel. +49 8382 975550  
www.weinstube-reutin-lindau.de

#### Zur Fischerin

Ludwigstr. 50  
Tel. +49 8382 5428  
www.fischerin.com

#### WINE TAVERNS – SEASONAL

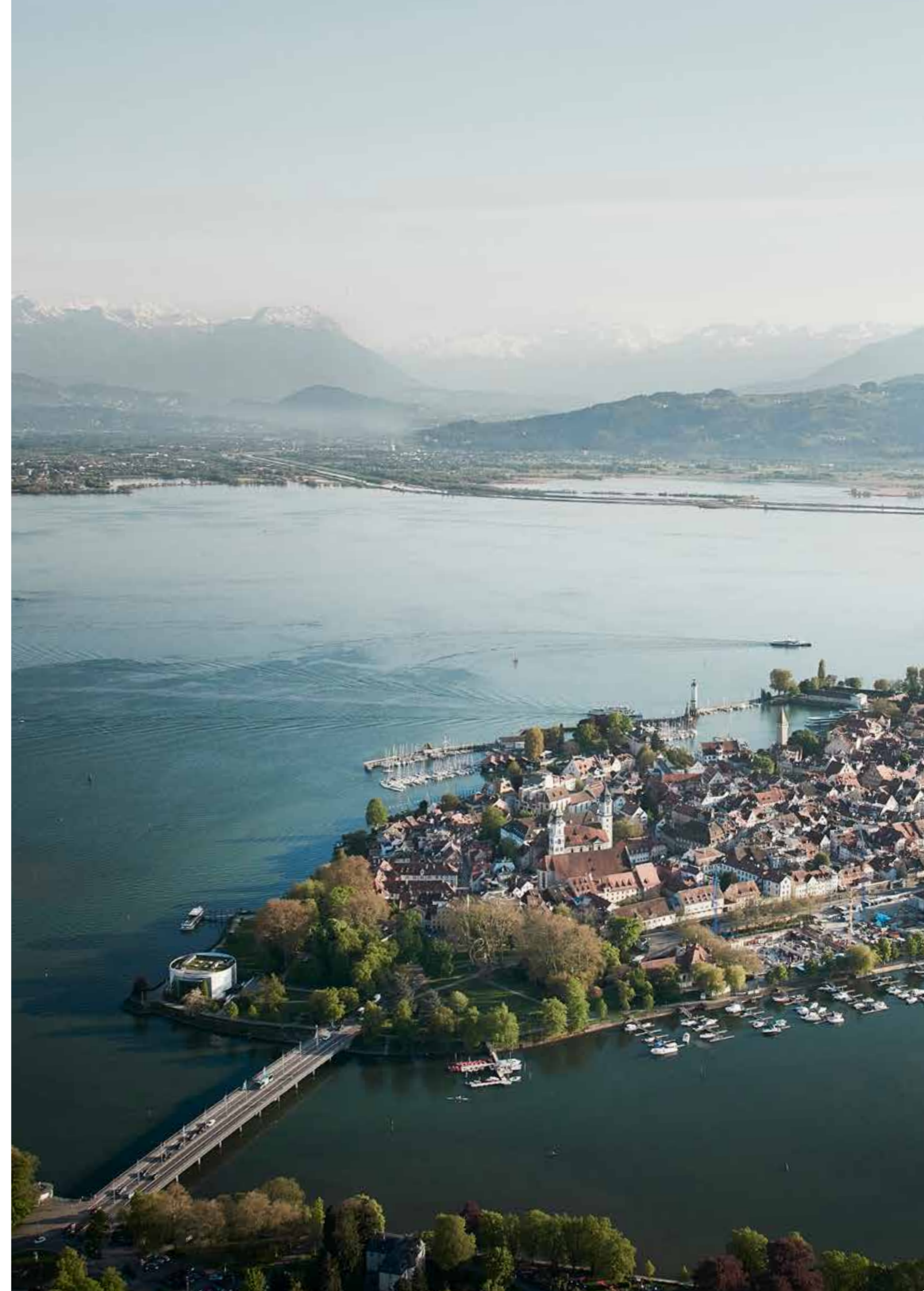
**Degelstein**  
Teresa Deufel  
Schachener Str. 213  
Tel. +49 8382 93440  
www.teresadeufel.de

#### Rädle Weingut Haug

Janine & Claudius Haug  
Kellereiweg 19  
Tel. +49 8382 5466  
www.weingut-haug.de

#### Schönauer Rädle

Richard Brög  
Kellereiweg 38  
Tel. +49 8382 4410  
www.broeg-schoenau.de



## IMPRINT

### PUBLISHER

Lindau Tourismus und  
Kongress GmbH

Linggstraße 3  
D-88131 Lindau im Bodensee  
info@lindau-tourismus.de

[www.lindau.de](http://www.lindau.de)

Tel. +49 8382 260030

Fax +49 8382 260026

### Executive directors:

Carsten Holz, Alexander Warmbrunn

### CONCEPT AND DESIGN

Zone für Gestaltung,  
Sonja Eiermann  
[www.gestaltung.zone](http://www.gestaltung.zone)

### TEXT

p. 24 – 27: Kulturamt Lindau  
p. 69: Patricia Erne /  
Bregenz Tourismus &  
Stadtmarketing GmbH  
All others: Janka Kreißl /  
Lindau Tourismus und  
Kongress GmbH

### TRANSLATION

Neysan Donnelly  
[www.clearscience.org](http://www.clearscience.org)

### PRINT

W. Kohlhammer Druckerei GmbH + Co. KG  
[www.kohlhammerdruck.de](http://www.kohlhammerdruck.de)

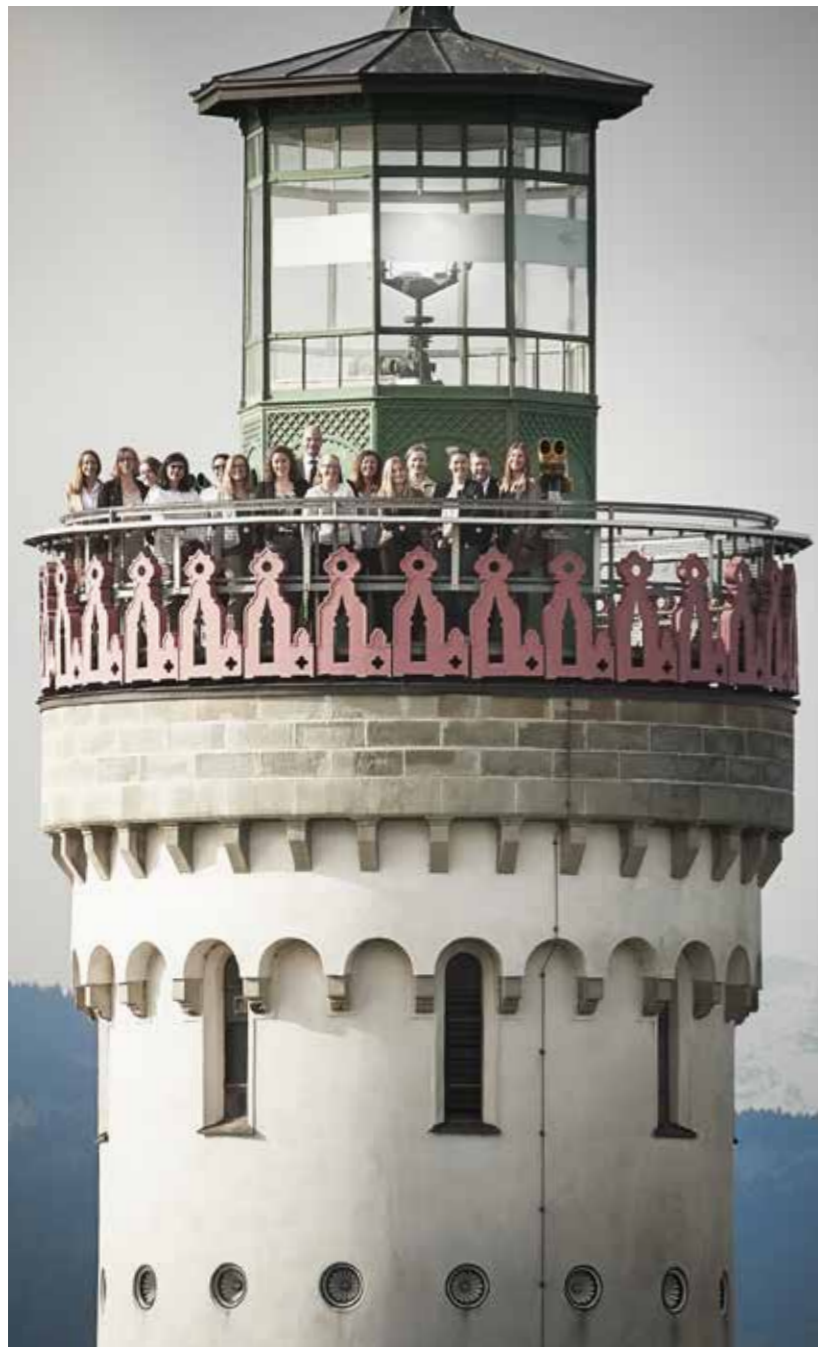
### PHOTOGRAPHY

Image credits (©)/ Photographers (Legend: S=page followed by page number; l=left; r=right; o=top; m=middle; u=bottom; P=position followed by number):

Gert Krautbauer/Bayern Tourismus: Titel;  
Hari Pulko: S1, S2o, S2u, S3o, S3u, S7o, S8, S10,  
S11o, S12/13, S14o, S15, S16, S17, S18, S20r,  
S21l, S21r, S22/23, S29, S30o, S30lu, S30ru, S32lu,  
S32ru, S34, S35P1, S35P2, S35P3, S35P4, S36o,  
S36u, S37, S40, S42l, S42ro, S42ru, S43l, S43r,  
S44/45, S46, S48/49, S52/53, S55l, S55r, S56, S60,  
S61l, S61r; S63, S91, S99, S100; Wolfgang Schnei-  
der: S4/5, S19, S20l, S20m, S59, S70/71; Christian  
Flemming: S11u; Privat: S14u, S31, S67; Aldo  
Amoretti: S32o; WALDNER Unternehmensgruppe:  
S38, S39; Konstantin Volkmar: S47u; Fabian  
Enzensperger: S50lu, S50ro, S50ru, S51lu, S51ro;  
Hotel Adara: S57; Nico Krauss: S58; Steffen Bergs:  
S62; Landkreis Lindau/Rolf Brenner: S64; Dornier  
Museum Friedrichshafen: S65l; Mainau GmbH:  
S65r; Achim Mende: S66l; Säntis-Schwebebahn AG:  
S66r; Studio Fasching: S68, S69

### Status November 2019

Neither the publisher nor the advertisers are liable for possible printing errors in this brochure. Subject to amendment. Reproduction, incl. in part, only with the permission of Lindau Tourismus und Kongress GmbH.



# Lindau soulbottle

Practical, stylish and  
good for the environment

© David Mathis



\_ 0.6 l glass bottle

\_ 100 % plastic- and toxin-free

\_ dishwasher-safe

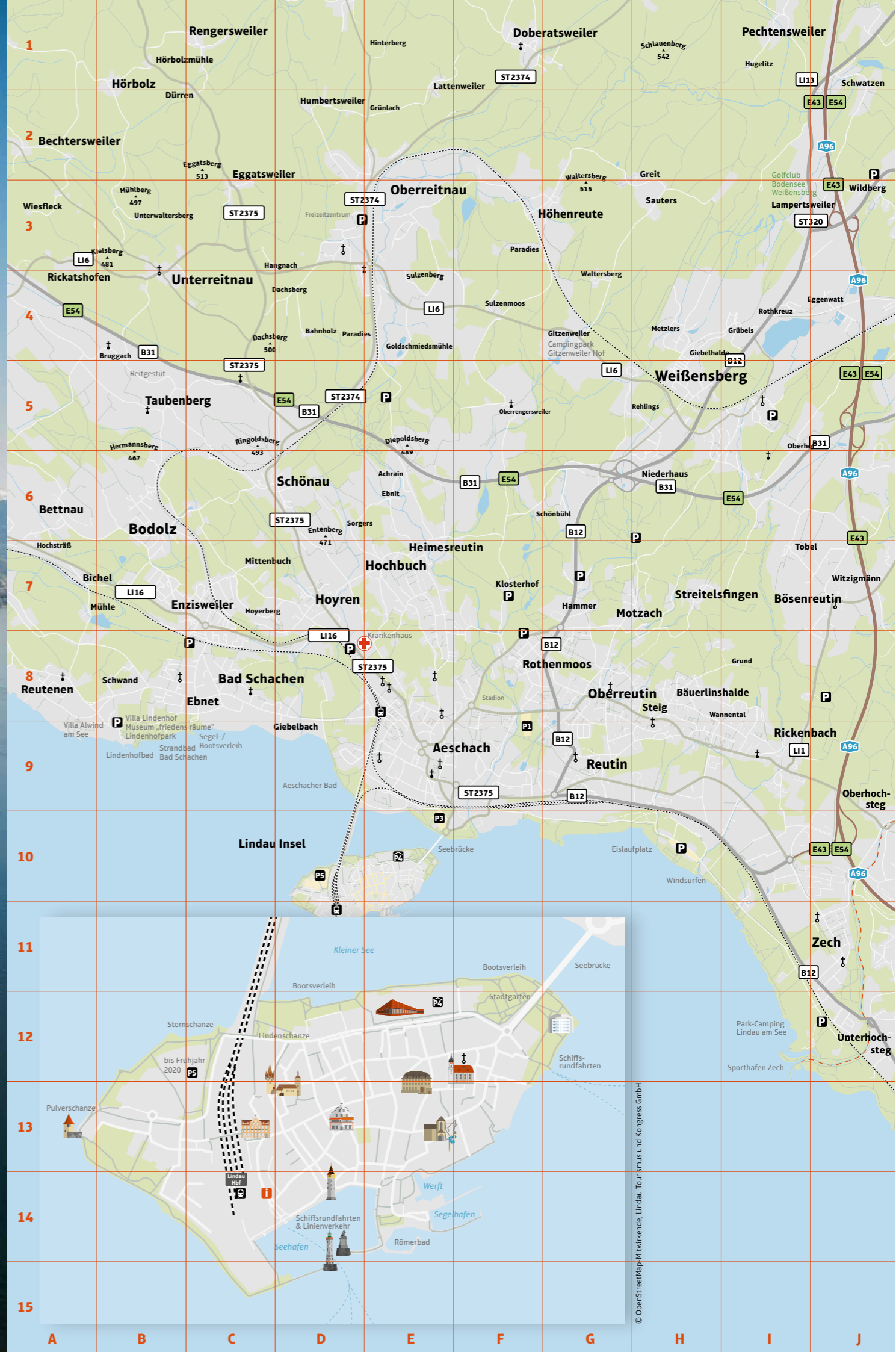
\_ produced in a fair and climate-neutral way in Germany

\_ € 1 from the sale of each bottle flows into drinking water projects

soul  
bottles

The soulbottle is available for € 27.90 incl. VAT  
at Tourist Information Lindau (Alfred-Nobel-Platz 1)  
or online at [www.lindau.de/lindauer-soulbottle](http://www.lindau.de/lindauer-soulbottle) (plus postal charges)

Lindau  
B O D E N S E E



STAGE. BAR. RESTAURANT. CASINO.

# EXCITEMENT & PLEASURE

Enjoy the classy atmosphere at the casino and have exciting times with classic table games like Roulette, Poker and Black Jack or a great variety of slot machines.

Meet friends at the bar, dine at restaurant or relax at the restaurant patio and enjoy the sun and the gorgeous view.

## **CASINO**bühne\*

cabaret, live music and comedy  
in intimate atmosphere

## **Poker Tournaments**

with guaranteed purse

## **CASINO club night**

live music, party & games

## **Restaurant & Bar**

## **Cantinetta al Lago**

mediterranean cuisine with great  
view over Lake and Alpes



\*CASINO**bühne**

# SPIELBANK LINDAU

Chelles-Allee 1 | 88131 Lindau / Bodensee | Tel: 0 83 82 / 27 74-0 | [www.spielbank-lindau.de](http://www.spielbank-lindau.de)